

34 Easey Road Beveridge, VIC

4 

2 

2 

Discover Your Dream Home at 34 Easey Road, Beveridge!

Step into comfort and style with this near-new, four-bedroom gem in the highly sought-after Mandalay Estate. Perfectly located just a minute's walk from Beveridge Primary School, this modern home offers everything you need for a growing family. Experience the best of Beveridge living at 34 Easey Road, where luxury and convenience meet. Schedule your viewing today!

Features include:

- Spacious Living, two expansive living areas to relax and entertain
- Gourmet Kitchen, with breakfast bar, 900mm stainless steel appliances, dishwasher and a large walk-in pantry
- Comfort & Convenience with ducted heating and cooling throughout;
- Main bedroom with walk-in robe and ensuite
- Modern Touches with floorboards throughout
- Low Maintenance front and back yards with side gate access

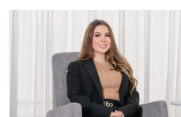
Price:

\$580,000 - \$630,000



Dean Zammit

0405 140 704



Teleisha Godfrey

0407 529 378



The floor plan is not to scale; measurements are indicative and in metres. All features included in this 3D plan are for inspiration purposes only. This is not an exact replica of the property or the position of exterior elements. Plans should not be relied on. Interested parties should make and rely on their own enquiries.



The floor plan is not to scale, measurements are indicative and in metres. Exterior elements are not in position. Plans should not be relied on. Interested parties should make and rely on their own enquiries. All other information provided has been collected from reliable sources but cannot be guaranteed for accuracy.