



15 Burton Place Lindfield, NSW 4 3 2

Designer family luxury that's breathtaking in every feature

- A supremely easy care lifestyle in an elite group of just 12 luxury residences
- Open plan living and dining, 3.6m ceilings, tray ceilings, designer lighting
- Gaggenau 5-burner gas cooktop, two ovens, warming drawer and dishwasher
- Integrated Liebherr fridge and freezer, abundant storage, marble island bar
- Four extra-large bedrooms + home office with separate entry, built-in robes
- Palatial master: walk-in robe, double shower, bath and heated floors to ensuite
- Three bathrooms with premium fittings, designer details and sleek lighting
- Covered outdoor entertaining deck with BBQ gaspoint and garden privacy

Inspect: Saturday, 19th October 2024 10:00 - 10:30  
Auction: 09/11/2024 04:00 pm

Price: Auction - 9th November

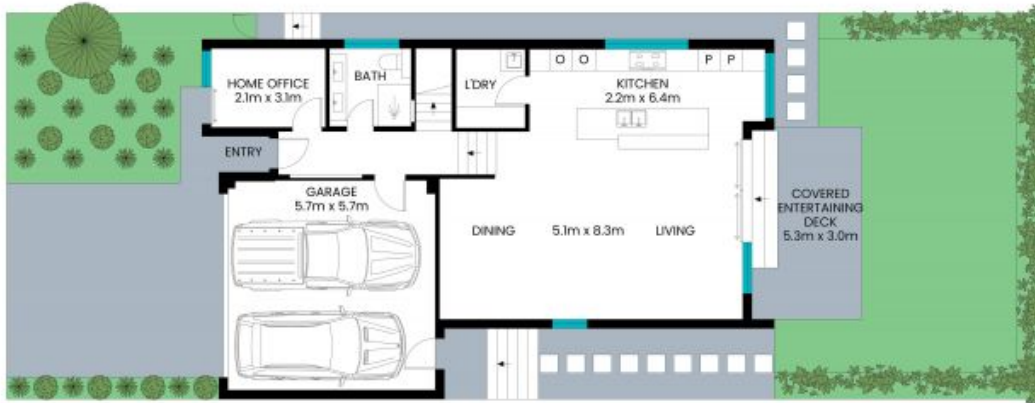


Ryan Woo  
0410 884 680



Alex Liapis  
0430 401 311

15 Burton Place  
Lindfield



Internal area: 223m<sup>2</sup>

The site plan and floor plan are not to scale; measurements are indicative and in meters. Bushes and trees are placed for illustration purposes. Plans should not be relied on. Interested parties should make and rely on their own enquiries. All other information provided has been collected from reliable sources but cannot be guaranteed for accuracy.