



10 Greenfield Crescent Elderslie, NSW



Stylish family living in Elderslie

Nestled in the sought-after community of Elderslie, this stunning 4-bedroom home perfectly blends modern luxury with family-friendly comfort. Immaculately presented and equipped with high-end features, this property is ready to welcome its new owners.

Key Features include:

- > Spacious 4-bedrooms with built-in-robos, master offering an ensuite and walk-in-robe.
- > Ducted air conditioning with 2 zones for year-round comfort.
- > Gourmet kitchen with stone benchtops, Miele oven, induction stovetop, and dishwasher overlooking the open plan dining and living area.
- > Elegant timber flooring throughout, enhancing the home's warmth
- > Covered alfresco area off the lounge room with electric caf?-style blinds, perfect for outdoor entertaining.
- > Grassed backyard with a cozy firepit area, ideal for relaxing evenings.
- > Side access, offering additional convenience and storage options.

This home offers everything a modern family could desire, from stylish interiors to practi...

Inspect: Saturday, 21st September 2024 12:00 - 12:30

Price: \$970,000 - \$1,050,000



Anthony Grima

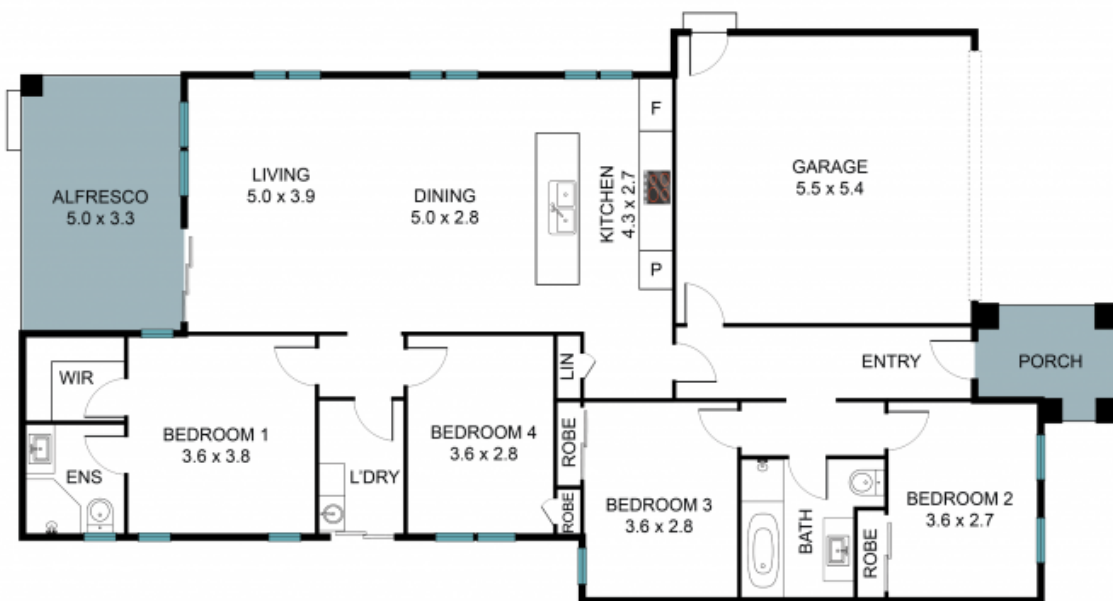
0403 613 271



Rebecca Philp

0403 613 271

STONE



10 Greenfield Cres, Elderslie NSW 2570



The floor plan is not to scale, measurements and in metres. Exterior elements are not in position.
Plans should not be relied on. Interested parties should make and rely on their own enquiries.
All other information provided has been collected from reliable sources but cannot be guaranteed for accuracy.