

The logo for STONE real estate, featuring the word "STONE" in a bold, white, sans-serif font inside a blue rectangular box with a white border.

19 Newfoundland Way Box Hill, NSW



NEW BUILT FOUR BEDROOM HOME

Be the first to secure this purpose built brand new 4 bedroom home, sure to impress the most discerning tenant.

- Four bedrooms with built in wardrobes, timber laminate floors
- Two bathrooms, with ensuite to main and third toilet/powder room downstairs
- Large open plan living and dining area leading onto undercover entertainment area
- Additional retreat/study/office area on upper floor
- Entertainers kitchen with plenty of storage, stone benchtops, quality appliances including gas cooking and dishwasher
- Reverse cycle ducted air conditioning throughout and gas heating point
- Automatic single garage with internal access
- Level rear lawn and very low maintenance grounds

Price: \$795 per week

Available Date: 01/09/2024

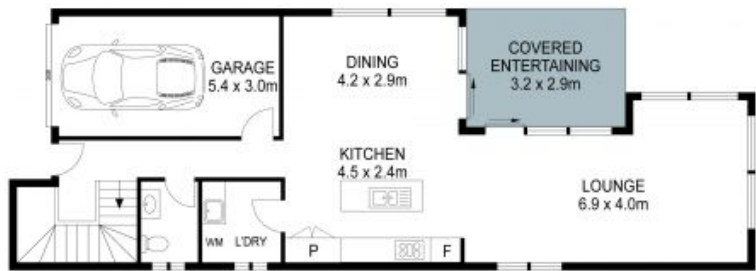


Daniel Yao

8893 2245

19 Newfoundland Way, Box Hill

4 2 1



THIS IS AN ARTIST'S IMPRESSION - ALL DIMENSIONS, LAYOUTS AND TREES ARE APPROXIMATE
ALL INTERESTED PARTIES SHOULD MAKE AND RELY ON THEIR OWN ENQUIRIES

