



14 Danette (aka 246 Ellison Rd) Street Geebung, QLD 4 2 2

Family Friendly

Welcome to this immaculate postwar gem, situated in the heart of Geebung. Set on a generous 625sqm corner block, this residence offers ample space with endless possibilities for expansion and growth. With its prime location, you're just moments away from parkland, shops, and schools, making it an ideal choice for families and investors alike.

- Large 625sqm corner block
- North / South facing aspect
- Internal security system
- Air-conditioning
- New PVC and Colourbond fencing
- NBN connected
- Family friendly floorplan
- Neat as a pin original family home with new LED lighting

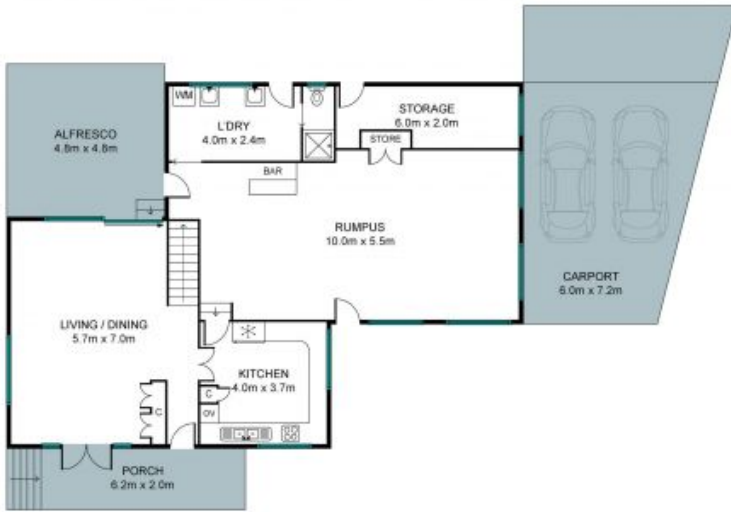
Price: Offers over \$975,000



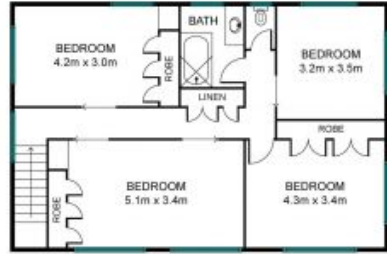
Tristan Rowland

0411 572 970

INTERNAL 227 SQM
EXTERNAL 86 SQM
TOTAL 313 SQM



LEVEL 1



LEVEL 2

The site plan and floor plan are not to scale; measurements are indicative and in metres. Bushes and trees are placed for illustration purposes. Plans should not be relied on. Interested parties should make and rely on their own enquiries.

246 Ellison Road, Geebung

Stonerealestate.com.au

