



17/60 Epping Road Lane Cove, NSW



Two bedroom penthouse apartment for rent

Nestled at the rear of the block, this top-floor apartment offers a serene and sunlit living environment, ensuring both comfort and privacy. The apartment's advantageous top-floor position at the rear of the block minimizes noise disturbances, creating a tranquil retreat in a bustling area. This property is ideal for those seeking a convenient and peaceful lifestyle. Its prime location provides effortless access to a range of nearby amenities and services, making it an excellent choice for those who value both convenience and quality of life.

Features include:

- Welcoming L-shaped lounge area opening to charming balcony with a pleasant green outlook
- Classic kitchen with stainless steel appliances, ample bench, and storage options
- Two generous bedrooms, main with built in wardrobes
- Main bathroom with full sized combined bath and shower and the internal laundry
- Split-system air conditioning for year-round comfort
- Single car space

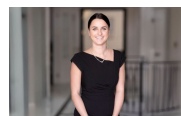
Inspect:

Thursday, 19th September 2024 4:00 - 4:15

Price:

\$590 per week

Available Date: 14/09/2024



Natasha Amos

0415 755 587



Stephanie Ryan

0451 307 760