



6/1 Jersey Road Artarmon, NSW



Sought after security building in the heart of the village

Living doesn't come any easier than this spacious double brick apartment just 280m to rail and the leisure of Artarmon village cafes. Pristinely presented, on the elevated first floor of this highly sought after security building, enjoying views of the garden and leafy streetscape. The interiors draw abundant natural light through large glass doors that interconnect the spacious living area and both bedrooms with the covered entertainer's balcony, running the entire length of the layout. Ready to live in or lease out, with scope to personalise with your own style. This is one of the best.

- Well-maintained and managed strata building keeps fees and levies sensible
- Enjoy the central village lifestyle as a first home or invest and lease out
- Walk to popular Artarmon Public School, in Chatswood High catchment
- Take a level stroll to Chatswood retail, leisure, and entertainment district
- Elevated first floor with lift in a popular double brick security building
- Light-filled open living and dining segues to covered entertainer's balcony
- Neatly presented full kitchen with cooktop, oven and grill
- Two bedrooms, spacious main, mirror built-in robes, flow to full width balcony

Price:

Contact Agent



Sahil Kotian

0434 172 588

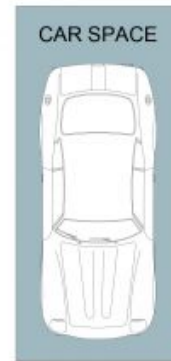
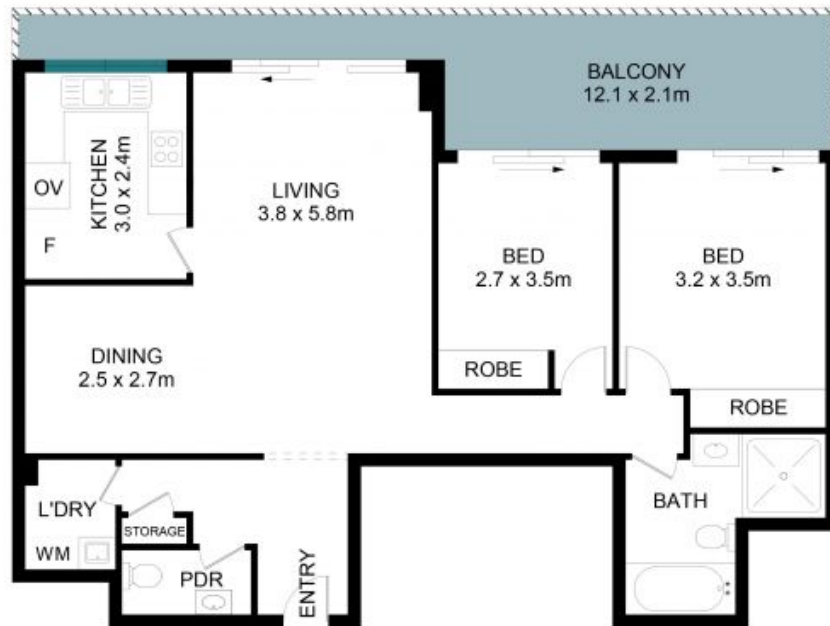


Alex Andonian

0432 018 535

6/1 Jersey Road
Artarmon

STONE



The site plan and floor plan are not to scale; measurements are indicative and in metres. Bushes and trees are placed for illustration purposes. Plans should not be relied on. Interested parties should make and rely on their own enquiries. All other information provided has been collected from reliable sources but cannot be guaranteed for accuracy.