

2/105 Henry Parry Drive Gosford, NSW



### Ideal investment or entry level unit - Access via Mouat Lane

Low maintenance and close to everything this unit is ideal as an investment, entry to the market or those wanting to be close to town and transport.

- Two bedrooms with built ins
- Separate toilet, bath and shower
- Neat and tidy throughout
- Single lock up garage
- Estimated return \$420 per week
- Walk to shops, trains and buses
- Access via Mouat Lane at the rear
- 60 minutes north of Sydney CBD

**Price:** \$380,000  
**Council Rates:** \$1,085.00 p/q  
**Water Rates:** \$654.16 p/q  
**Strata Rates:** \$1,551.00 p/q



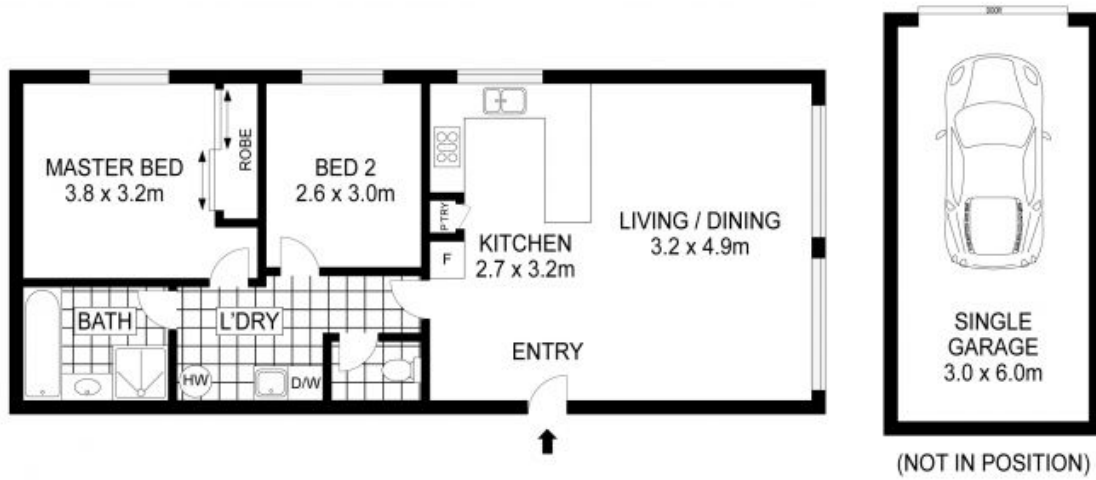
**Christel Renton**

0417 208 314



**Helen Hughes**

0418 220 622



INT: 76m<sup>2</sup> N

The floor plan is not to scale; measurements are indicative and in metres. Exterior elements are not in position. Plans should not be relied on. Interested parties should make and rely on their own enquiries. All other information provided has been collected from reliable sources but cannot be guaranteed of accuracy.

2/105 Henry Parry Drive, Gosford

STONE