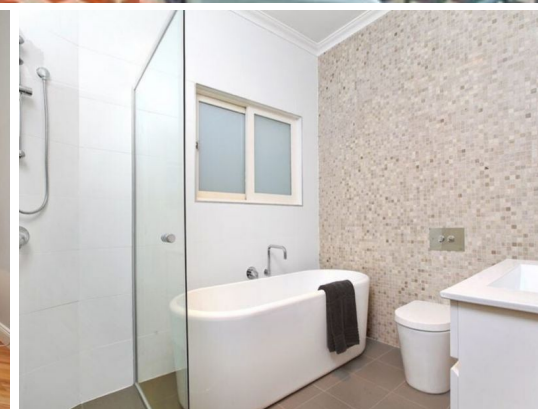


STONE



131 Edgeware Road Enmore, NSW

3

1

1

Fully Renovated Traditional Facade Terrace

In an exciting part of the Inner West this single storey traditional facade three Bedroom terrace is fully renovated. The property is located moments from the vibrant Enmore Road and a walk to Enmore Park and Marrickville metro. Features Include:

- 3 Bedrooms, two with built-in wardrobes and Main with Split system Air Condition
- Open plan living and dining with split system Air Condition
- Modern Kitchen with stone bench tops and ample cupboard
- Fully renovated bathroom with separate bath tub
- Polished floorboards throughout and high ceilings
- Private patio/courtyard setting
- Large remote control lock up garage
- Pets considered subject to application

APPLICATIONS MUST BE SUBMITTED ONLINE AT www.realestate.com.au

Price: Deposit Taken
Bond: \$4,400
Available Date: 12/08/2024



Paul Alam

0422 004 969



Olivia Makhoul

0412 630 727