



2 Weemala Crescent Bradbury, NSW

3 

1 

1 

The perfect investment opportunity

Nestled on a large 582.3m2 corner block, this charming three-bedroom brick home offers the perfect blend of comfort and convenience. With a neat and tidy presentation, the property features a spacious separate living room and a dining area adjacent to the kitchen, ideal for family gatherings. The timber kitchen boasts ample storage space, ensuring functionality and style.

The main bathroom is thoughtfully designed with a shower, bathtub, and a timber-panelled ceiling that adds a touch of warmth and character. The main bedroom comes complete with a built-in wardrobe and ceiling fans to all bedrooms for added comfort.

This delightful property is equipped with split system air conditioning, ensuring comfort throughout the seasons.

Located in a friendly and well-established neighbourhood, you'll enjoy easy access to local schools, parks, shopping centers, and public transport. This is a rare opportunity to secure a premium property in Bradbury. Don't miss this opportunity to invest in a well-maintained...

Price:

\$799,000 - \$849,000



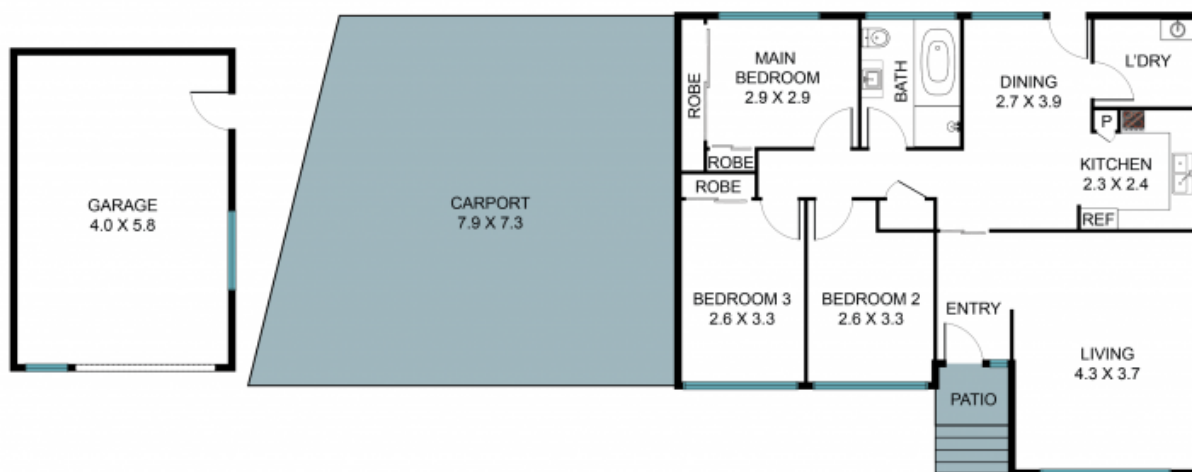
Gary Luke

0418 451 105



Kaitlin Hall

0404 529 516



2 Weemala Cres, Bradbury NSW 2560

The floor plan is not to scale, measurements and in metres. Exterior elements are not in position.
Plans should not be relied on. Interested parties should make and rely on their own enquiries.
All other information provided has been collected from reliable sources but cannot be guaranteed for accuracy.