



13 Blaxcell Place Harrington Park, NSW 3 2 2

Serene location

Discover your new lifestyle in this beautifully updated home, nestled in a quiet cul-de-sac directly across from the picturesque Four Seasons Park. This inviting residence features fresh paint and new carpet throughout, creating a modern and welcoming atmosphere. This home is perfect for families seeking comfort and convenience.

Features:

- > Situated opposite the elevated Four Seasons Park, perfect for outdoor activities
- > Freshly painted, new carpets and vertical blinds throughout
- > Comfortable living room with split system air conditioning for year-round climate control
- > Spacious master with ensuite, plus two additional bedrooms
- > Double Garage offering ample storage and secure parking
- > Functional layout including a well appointed kitchen adjacent to the dining room

Price: \$950,000 - \$990,000



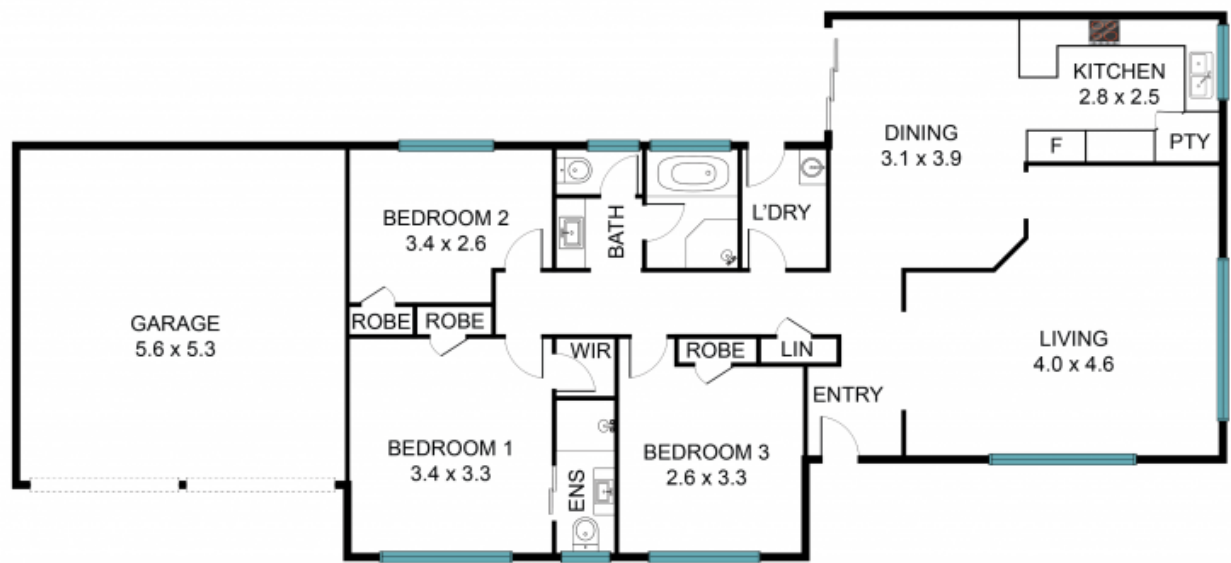
Troy Nicholson

0438 801 234



Mark Bricknell

0438 801 234



13 Blaxcell Pl, Harrington Park NSW 2567



The floor plan is not to scale, measurements and in metres. Exterior elements are not in position.
Plans should not be relied on. Interested parties should make and rely on their own enquiries.
All other information provided has been collected from reliable sources but cannot be guaranteed for accuracy.