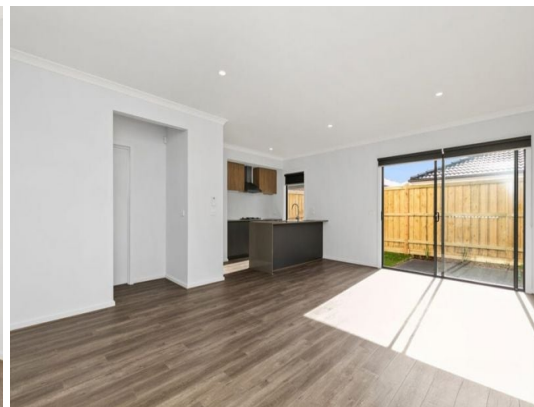


STONE



17 Celestial Way Beveridge, VIC



Brand new with golf course views

This brand-new townhouse overlooks the beautiful Mandalay Golf Course and is located in a quiet street. The huge master suite has a private balcony to enjoy the views, plus a large ensuite and walk-in-robe. Downstairs you will find a conveniently positioned study at the front of the home, 4-door European laundry and linen closet plus the open-plan kitchen meals and living space.

Features:

- Luxe kitchen with feature splashback, large island bench and stainless-steel appliances including dishwasher
- 3 carpeted bedrooms with built-in-robos and wall heaters
- Main bathroom with bath
- Study
- Alarm system
- Low maintenance yard with concreted patio
- Double garage with internal and external access to backyard
- Split system heating & cooling

Inspect:

Saturday, 21st September 2024 10:30 - 10:45

Price:

\$480 pw

Available Date: 09/08/2024



Jessica Conte-Singh

0400 134 550



Brenae Biagioni

0417 669 287