



2/108 Cammeray Road Cammeray, NSW

3

2

1

Gracious Duplex

Welcome to a highly desirable 3 bedroom lower duplex in a tranquil & serene street, an elegant and rare property in an exclusive pocket close to Folly Point foreshore, Green Park village shops, Primrose Park, buses and a 10 minute drive from the city.

- Substantial combined living and dining area full of natural light
- Delightful NE facing wrap around decking perfect for entertaining
- Secluded partly covered courtyard garden
- Spacious king size master bedroom with built-in wardrobe and ensuite
- Two further bedrooms with built-in wardrobes
- Single lock up garage
- Granite benchtop art deco kitchen with gas stove, dishwasher
- Modern tiled bathroom with frameless glass shower and vanity

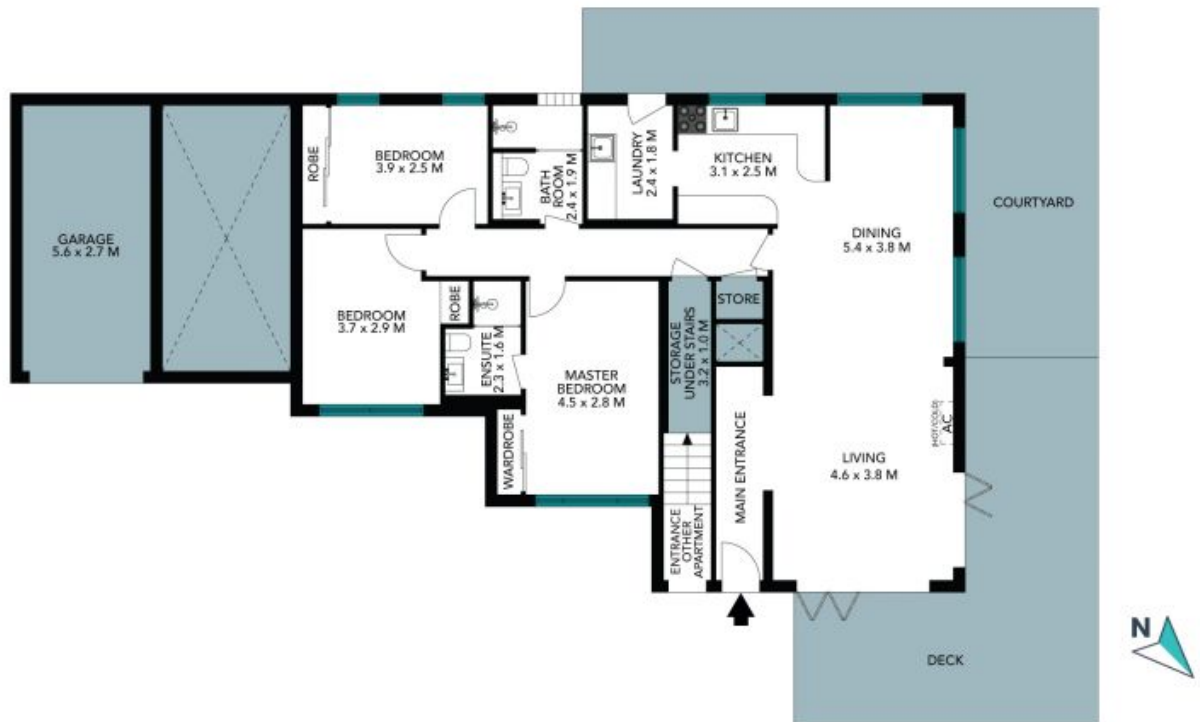
Price:

\$2,595,000



Andrew Thomas

0421 281 234



The floor plan is not to scale, measurements are indicative and in metres. Exterior elements are not in position. Plans should not be relied on, interested parties should make and rely on their own enquiries. All other information provided has been collected from reliable sources but cannot be guaranteed for accuracy.

2/108 Cammeray Road
Cammeray

STONE



The floor plan is not to scale; measurements are indicative and in metres. All features included in this 3D plan are for inspiration purposes only. This is not an exact replica of the property or the position of exterior elements. Plans should not be relied on. Interested parties should make and rely on their own enquiries.