



14/545 Pacific Highway St Leonards, NSW

1 1 1

Walk-to-everything apartment in bustling St Leonards

Located in the bustling heart of St Leonards, amongst cafes, restaurants and shops, this stylish 1-bedroom apartment offers an inner-city lifestyle ideal for first homeowners or investors. With house-like proportions, and an over-sized entertaining balcony, enjoy walk-to-everything convenience, footsteps from the new metro, train and buses, and in Anzac Park Public and Cammeraygal High School zone.

- Modern 1-bedroom apartment with north-easterly aspect, metropolitan lifestyle
- Expansive master bedroom with mirrored BIR and ensuite with stone vanity
- Master suite has direct access to balcony through wall-to-wall sliding doors
- Open-plan gas kitchen, Caesar stone benches, high-end De'Longhi appliances
- Extensive open-plan living area with uninterrupted flow to spacious balcony
- Covered entertaining balcony with privacy louvres, sizeable study nook
- European laundry, additional storage, composite timber flooring throughout
- Secure car space, lift access, security video intercom, ducted air conditioning

Price: Sold - Contact Agent
Council Rates: \$303.00 p/q
Water Rates: \$178.00 p/q
Strata Rates: \$1,143.05 p/q

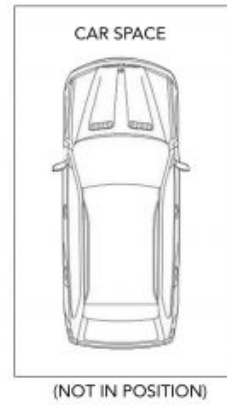
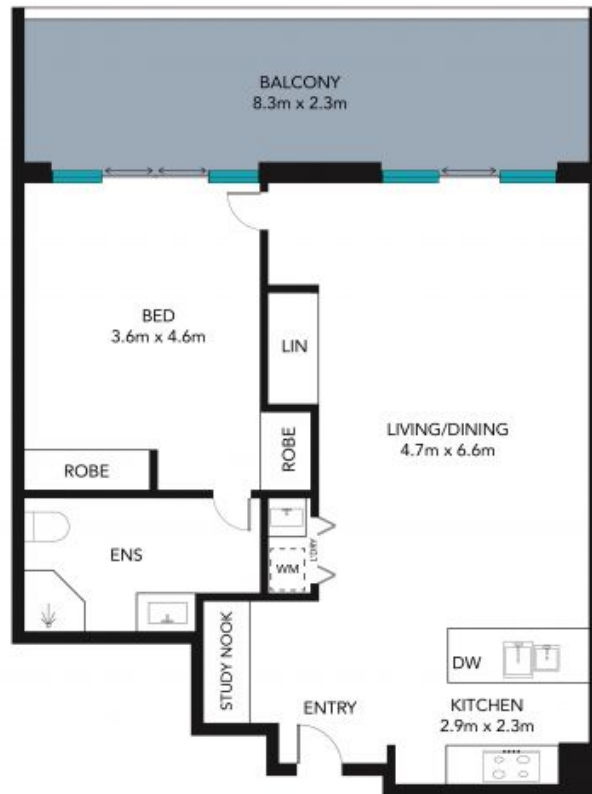


Claudia Conroy
 0429 338 412



Max Ma
 0468 398 868

14/545 Pacific Hwy,
Street Leonards



The site plan and floor plan are not to scale; measurements are indicative and in meters. Bushes and trees are placed for illustration purposes. Plans should not be relied on. Interested parties should make and rely on their own enquire. All other information provided has been collected from reliable sources but cannot be guaranteed for accuracy.