



A610/40-50 Arncliffe Street Wolli Creek, NSW

2

2

1

## Modern Large & North-West Facing Two Bedroom Apartment !

Centrally positioned in Wolli Creek, this modern open-plan 2-bedroom apartment offers the ultimate in convenient living. A large, bright, and sunny balcony provides a relaxing area to soak in the district views. Wolli Creek Village, Woolworths, and Wolli Creek Train station are just 6 minutes' walk away. This apartment is an excellent opportunity for a growing family or investor.

- Spacious open plan living and dining
- Large Northwest Facing Balcony
- Modern Kitchen with Smeg appliances
- Comfy Bathroom with built-in robes and ensuite
- Located on the 6th floor with some district views
- Internal laundry and dryer
- Security Intercom, Air-conditioning
- Security car space

**Inspect:**

Thursday, 19th September 2024 4:30 - 5:00  
Saturday, 21st September 2024 2:15 - 2:45

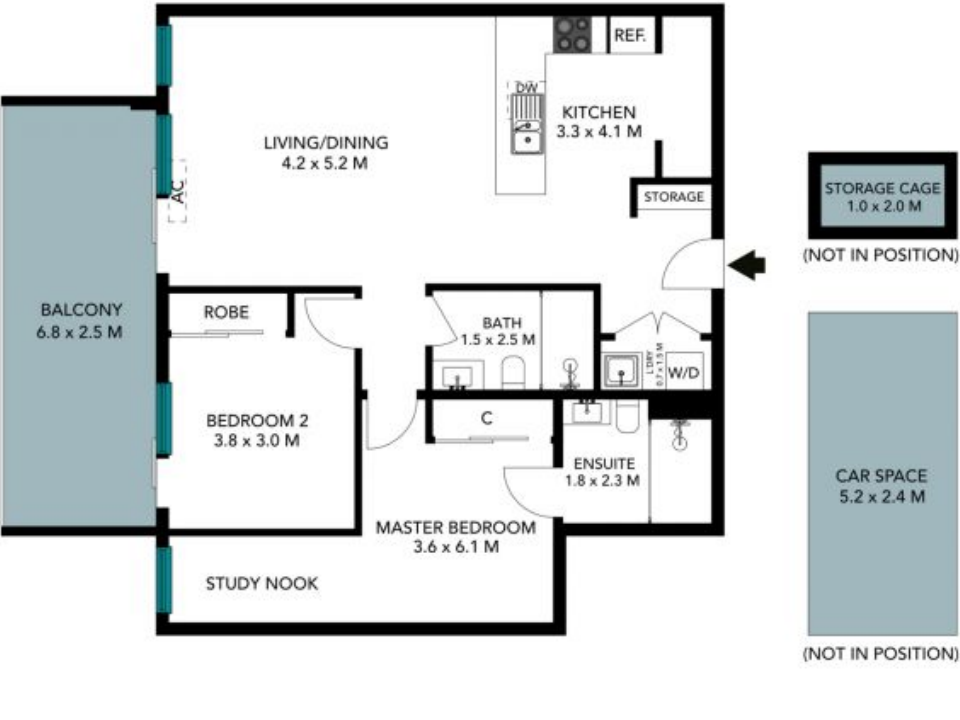
**Price:**

Contact Agent



**Li (sammi) Fan**

0415 959 888



The floor plan is not to scale, measurements are indicative and in metres. Exterior elements are not in position. Plans should not be relied on, interested parties should make and rely on their own enquiries. All other information provided has been collected from reliable sources but cannot be guaranteed for accuracy.

A610/40-50 Arncliffe Street Wolli Creek NSW 2205  
**Waterloo**



The floor plan is not to scale; measurements are indicative and in metres. All features included in this 3D plan are for inspiration purposes only. This is not an exact replica of the property or the position of exterior elements. Plans should not be relied on. Interested parties should make and rely on their own enquiries.