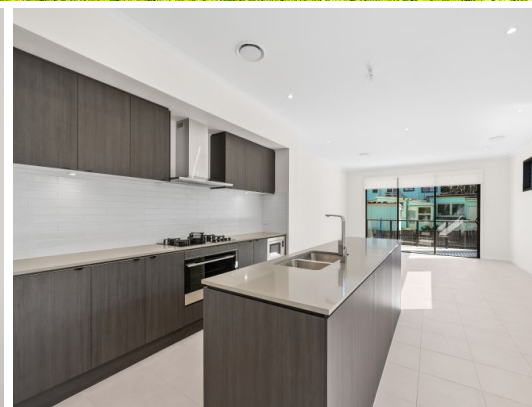
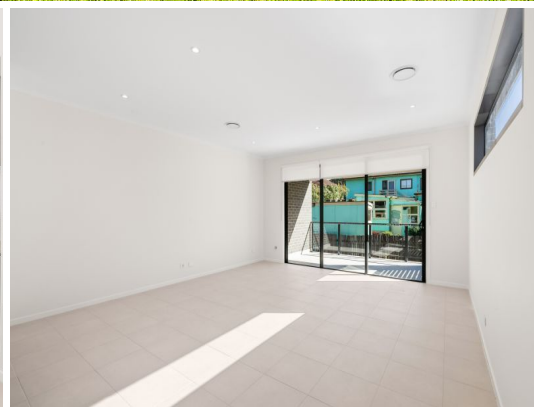


STONE



10A Harford Street North Ryde, NSW

4 

3 

2 

Brand new luxury duplex

This four bedroom brand new duplex offering unparalleled level of luxury . Be the first to enjoy this brand new prestigious home located in a quiet cul-de-sac destined to impress. Showcasing:

- Large open plan lounge/dining with seamless indoor-outdoor flow.
- Large bedrooms with wardrobes
- Premium kitchen with stone island benchtop and gas cooktop.
- Ducted air conditioning throughout.
- Internal access to automatic single lock-up garage plus off-street parking.

Available: 10/08/2024

Lease term: 12 months

Parking: Single lock up garage, plus off-street parking

Price: Deposit taken

Available Date: 10/08/2024



Stone North Ryde

02 8875 7845

Property Management