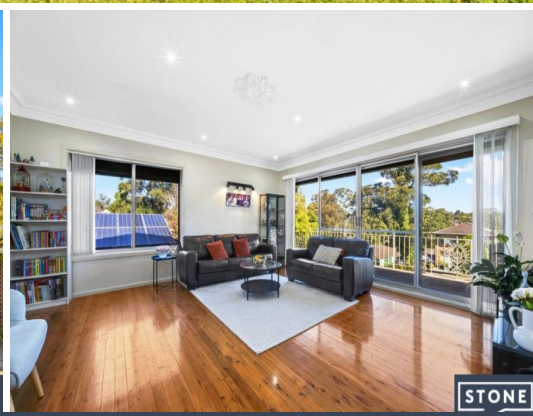
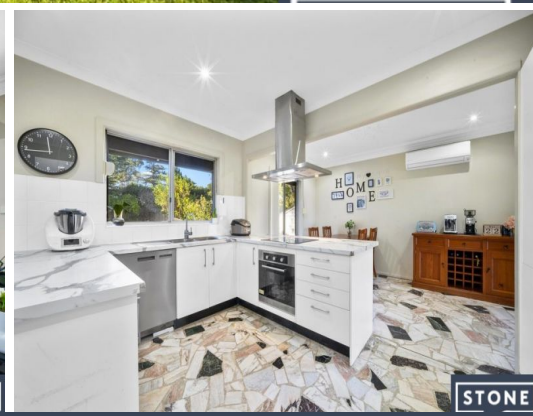




STONE



STONE



STONE

6 Christel Avenue Carlingford, NSW

4 2 2

Spacious Family Oasis on 1,105sqm in Prime Carlingford Location

Discover the perfect blend of comfort and convenience in this delightful 3 bedroom + study, 2.5-bathroom brick home, ideal for growing families. Situated on the high side of the street, this property offers a serene lifestyle with its generous sunroom and expansive backyard.

Key Features:

- Generous Land Size: Approx. 1,105sqm block
- Desirable Orientation: North-east facing yard
- Spacious Living Areas: Double-sized lounge room
- Functional Kitchen: Open kitchen with eat-in dining area
- Ample Storage: Built-in wardrobes in all bedrooms
- Sunroom Retreat: Large, fully enclosed entertainment sunroom
- Convenience: Three toilets, main bathroom with spa
- Easy Access: Internal access to a double lock-up garage

Price: Exclusive to Stone Real Estate Database



Brian Kong
0435 333 383



Kevin Dearlove
0403 338 302



6 CHRISTEL AVE, CARLINGFORD

Disclaimer: Please note that the information contained in this floor plan is provided by the client and is not guaranteed by the architect. The architect is not responsible for any errors or omissions. All dimensions are approximate.