



STONE



392 Crescent Head Road South Kempsey, NSW

4 

2 

3 

Charming Retreat with Modern Comforts!

Discover the perfect blend of tranquillity and convenience with this delightful 3-bedroom, 2-bathroom home, now available for the first time ever on the market! Situated on a spacious 1-acre block, this property offers ample room to move and grow.

Step inside to find a welcoming atmosphere with a large, spacious kitchen that will delight any home chef, complete with ample counter space. The home also features an inviting sunroom, perfect for relaxation and soaking in the beautiful surroundings. The front north-facing verandah provides a wonderful spot for morning coffee or evening relaxation.

Features of this home include:

- 4 bedrooms plus sunroom
- 2 bathrooms
- 2 bay lock up garage plus additional single lock-up garage
- Spacious kitchen
- Town water and septic system

Price: \$885,000

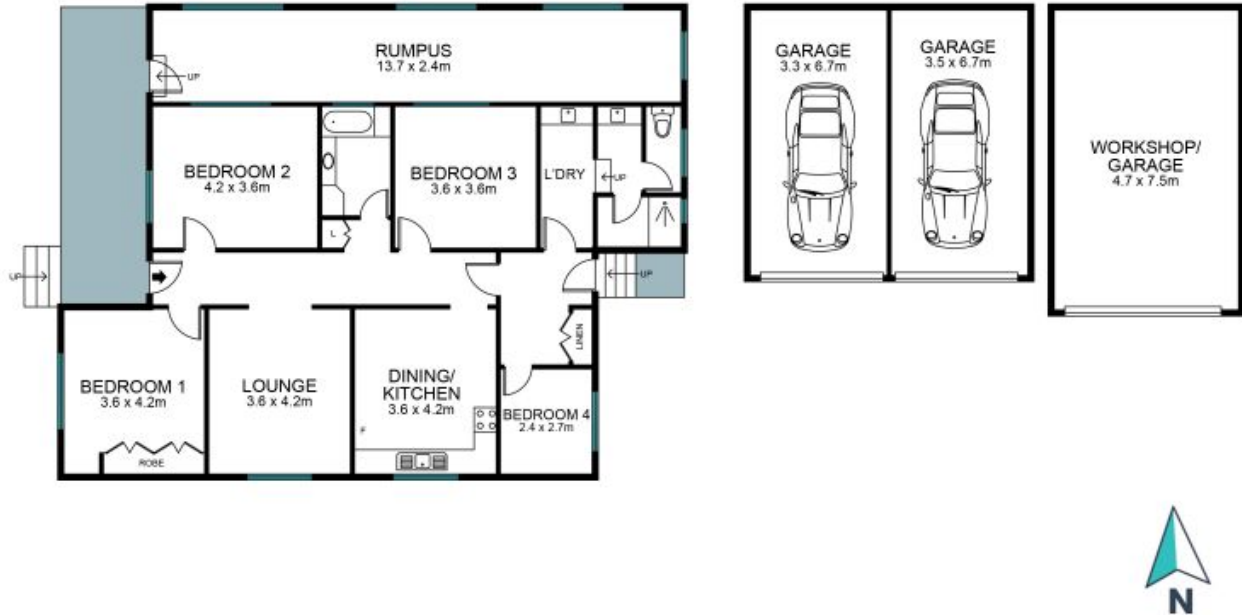
Council Rates: \$1,934.70/year (approx)



Josh Wicks

0448 637 509

392 Crescent Head Road
East Kempsey



The site plan and floor plan are not to scale; measurement are indicative in meters. Bushes and trees are placed for illustration purposes. Plans should not be relied on. Interested parties should make and rely on their own inquiries. All other information provided has been collected from reliable sources but cannot be guaranteed for accuracy.