

190 Shaftsbury Road Eastwood, NSW



## Sold Oct 2024 - Contact James 0420 665 913

Ideal for a dream-maker's transformation, this single-level brick classic presents exceptional renovation and redevelopment potential (STCA). Nestled on a generous 663.9sqm parcel of land, its brilliant location provides an unsurpassed context for family living, mere steps away from highly-sought-after schools and universities, Eastwood's bustling village, and its impressive train station and bus network.

- Captivating original character with a charming bay window and inviting porch
- Spacious formal lounge room with a timber fireplace, plus a versatile sunroom
- Traditional-style kitchen paired with dedicated, generously sized dining room
- Two sizeable, carpeted bedrooms featuring ornate plasterwork and picture rails
- Classic bathroom with a bathtub, external laundry room, and a single carport
- Lush, peaceful oasis featuring a manicured lawn bordered by beautiful gardens
- Approx. 700m to Eastwood Station, 500m to Marist Eastwood, 600m to St Kevin's
- 280m to Eastwood Public School, 1km to Ryde Hospital, 11 minutes to Macquarie Shopping Centre

**Price:** Auction on-site Saturday 31st August at  
**Council Rates:** ~~\$30,000~~ \$35,000 p/q  
**Water Rates:** \$173.29 p/q



**Chloe Mawass**

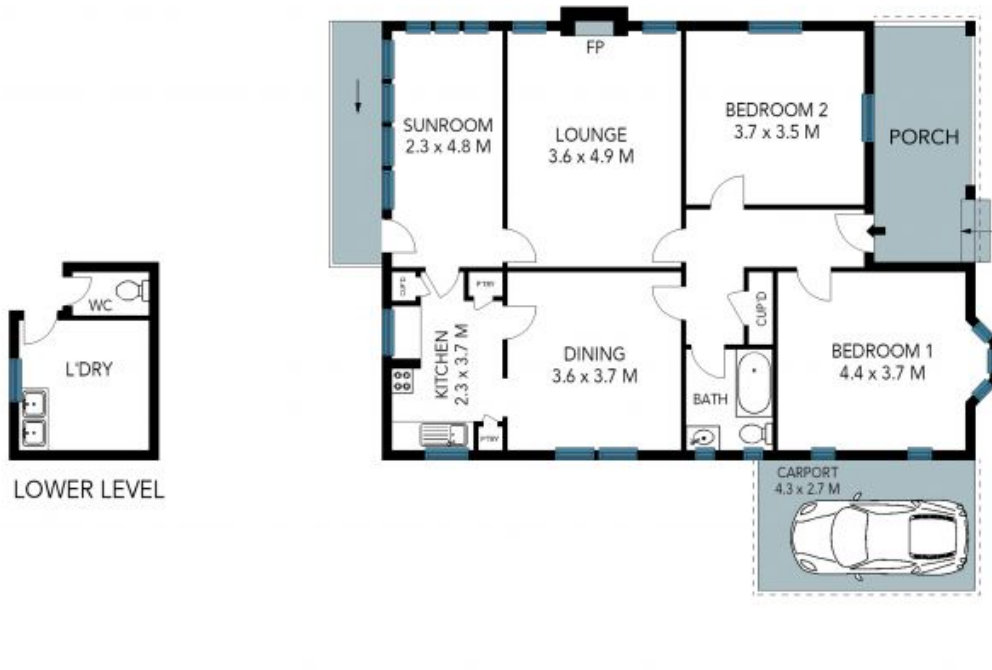
0431 983 240



**Jessica Zhou**

0412 733 135





The site plan and floor plan are not to scale; measurements are indicative and in metres. Bushes and trees are placed for illustration purposes. Plans should not be relied on. Interested parties should make and rely on their own enquiries. All other information provided has been collected from reliable sources but cannot be guaranteed for accuracy.