

28/190 Spit Road Mosman, NSW



SITTING ON TOP OF THE WORLD!

OUTGOINGS: Strata: \$1,264.60/qtr, Council: \$407.00/qtr, Water: \$171.41/qtr



Hamish Baker

0411 741 933



Suzi Zadel

0411 321 771

28/190 Spit Road
Mosman

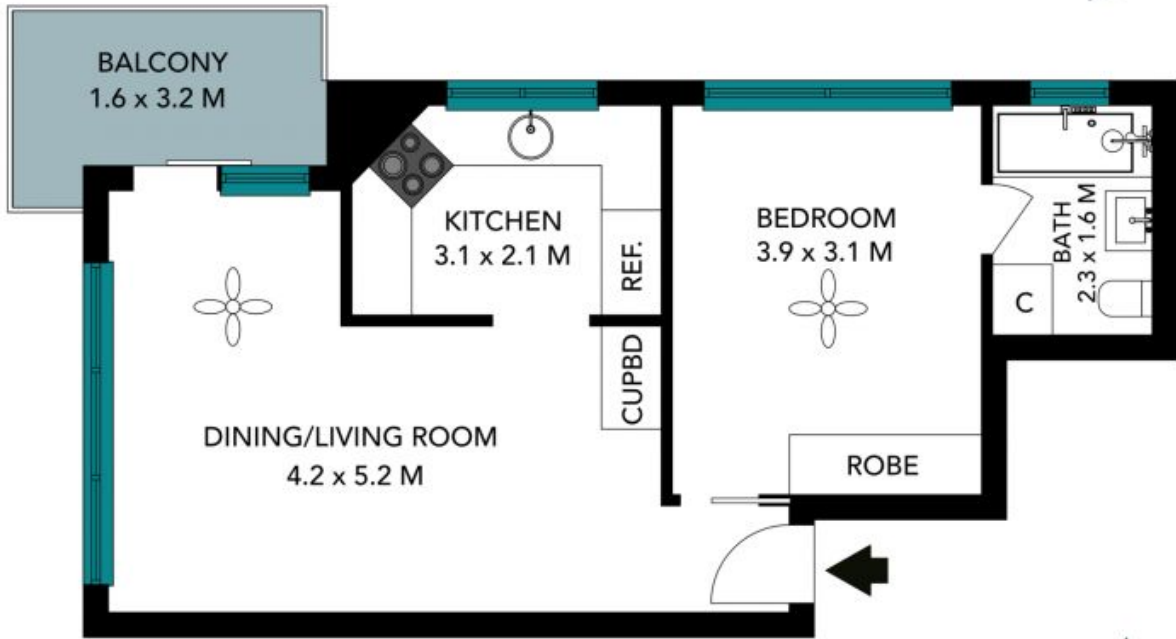
STONE



The floor plan is not to scale; measurements are indicative and in metres. All features included in this 3D plan are for inspiration purposes only. This is not an exact replica of the property or the position of exterior elements. Plans should not be relied on. Interested parties should make and rely on their own enquiries.

28/190 Spit Road
Mosman

STONE



The floor plan is not to scale. Measurements are indicative and in metres. Exterior elements are not in position. Plans should not be relied on. Interested parties should make and rely on their own enquiries. All other information provided has been collected from reliable sources but cannot be guaranteed for accuracy.