

32 Boardwalk Place Keilor East, VIC

3 2 2

Your dream location awaits

Discover your dream home with breathtaking views and a serene atmosphere, all in a prime location! This remarkable property offers an unparalleled combination of peace and convenience. Nestled in a tranquil setting with minimal traffic, you'll enjoy leisurely strolls along the paved walking tracks of Steel Creek. Despite the calm surroundings, you're still centrally located near sought after schools such as Penleigh and Essendon Grammar, St Bernard's College, and Rosehill College. Don't miss the opportunity to experience this oasis of tranquillity in the heart of the city!

Features include:

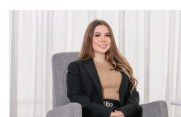
- Master bedroom with walk-in robe and ensuite
- Bedroom 2 with access to its own private courtyard
- Generous lounge room opening onto a balcony with a stunning view
- Kitchen with stone benchtops and high-end appliances
- Heating and cooling split systems throughout
- Oversized tandem double garage with ample storage and internal access
- Walking distance to Valley Lake and Peregrine Social Club

Price: \$760,000 - \$820,000



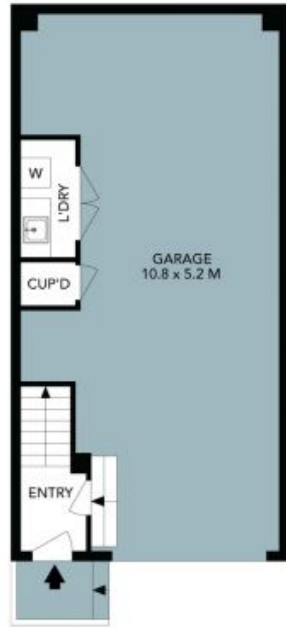
Dean Zammit

0405 140 704

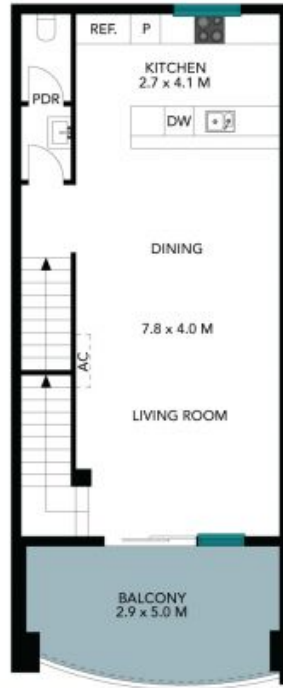


Teleisha Godfrey

0407 529 378



Ground Floor



First Floor



Second Floor



32 Boardwalk Place
Kellor East



Ground Floor

First Floor

Second Floor



The floor plan is not to scale, measurements are indicative and in metres. All features included in this 3D plan are for inspiration purposes only. This is not an exact replica of the property or the position of exterior elements. Plans should not be relied on. Interested parties should make and rely on their own enquiries.