

58 Carlyle Road East Lindfield, NSW

5 

3 

3 

Light open and perfectly scaled for extended families

This pristine up-to-date home draws captivating light throughout the spacious two-level layout, set against a backdrop of leafy valley views that bring the home to life.

- A location of superb natural beauty, leafy views and valley breezes
- Gorgeous modernist architectural appeal with soaring windows and staircase
- Three living areas, lounge and family rooms open outdoors, retreat upstairs
- Modern renovated kitchen adjoins dining, generous storage drawers + pantries
- Bosch induction cooktop, electric oven, Miele dishwasher, microwave
- Five bedrooms plus a study/6th bed, built-in/walk-in robes, two ensuites
- Multi-gen friendly: ground floor bedroom with ensuite + separate entry
- Three pristine contemporary bathrooms, internal laundry with outdoor access



Ryan Woo

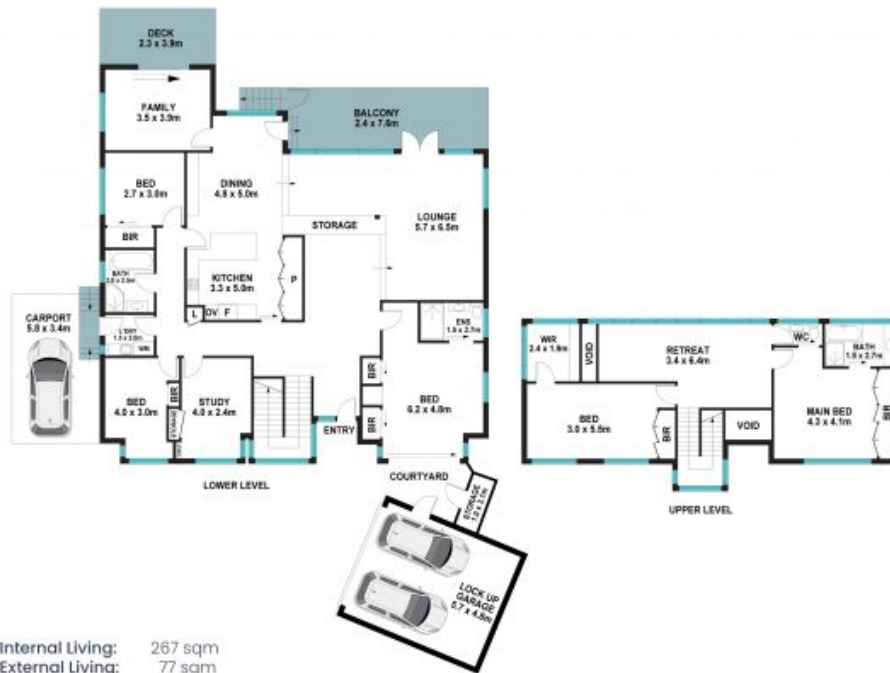
0410 884 680



Alex Liapis

0430 401 311

58 Carlyle Road
East Lindfield



Internal Living: 267 sqm
External Living: 77 sqm
Total Living Area: 344 sqm



The site plan and floor plan are not to scale; measurements are indicative and in metres. Bushes and trees are placed for illustration purposes. Plans should not be relied on. Interested parties should make and rely on their own enquiries. All other information provided has been collected from reliable sources but cannot be guaranteed for accuracy.