



4.309/18 Hannah Street Beecroft, NSW



Stylish Apartment in 'Beecroft Place'

Superb easy-living space that's stylishly appointed for modern living, this designer one-bedroom apartment has a walk to everywhere position, just 100m to the train station. It complements the modern busy lifestyle and is ideal for buyers seeking secure, low-maintenance living in an exclusive location in the catchment for Beecroft Public, Cheltenham Girls and Carlingford High.

- Extraordinary convenience, only 110m to station, cafes and shops
- Sleek contemporary kitchen featuring Miele dishwasher and fittings
- A security basement parking space, caged storage and life access
- Stylish apartment in the sought after new 'Beecroft Place' complex
- Ducted air-conditioning, video intercom
- Private balcony with easy access from bedroom and living room
- Great investment potential in an area with high rental demand
- In Beecroft Public, Cheltenham Girls High and Carlingford High catchments

Price: Auction Guide \$640,000
Water Rates: \$172.00 p/q
Strata Rates: \$1,220.00 p/q



Jeff Jianfu Luo

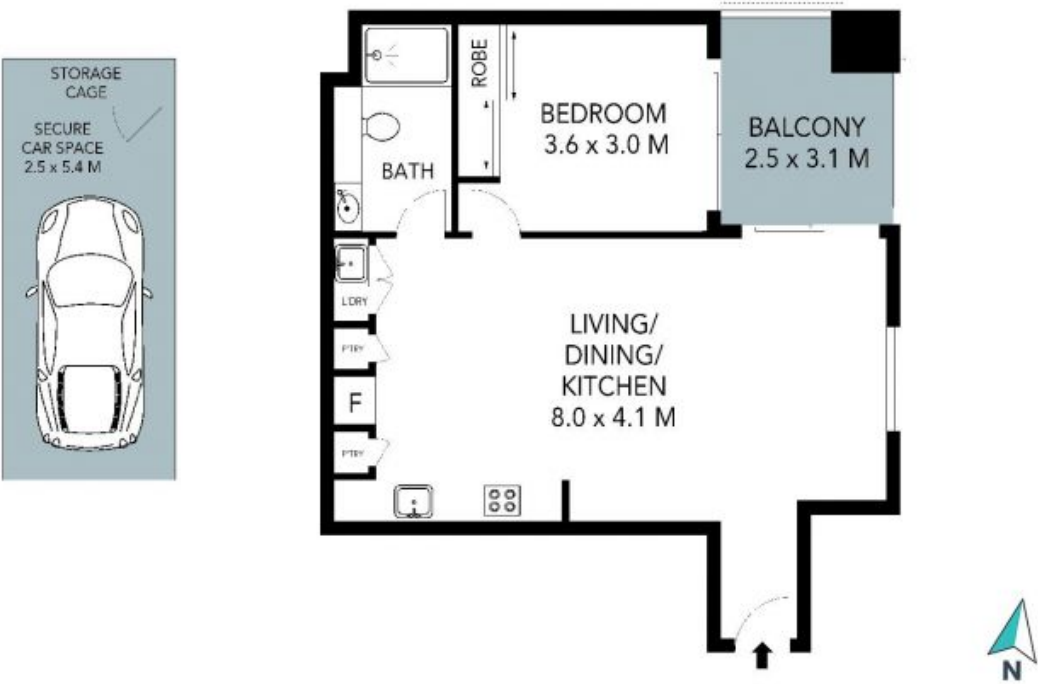
0425 286 668



Wenjie Luo

0433 971 007

4.309/18 Hannah Street,
Beecroft



The site plan and floor plan are not to scale; measurements are indicative and in metres. Bushes and trees are placed for illustration purposes. Plans should not be relied on. Interested parties should make and rely on their own enquiries. All other information provided has been collected from reliable sources but cannot be guaranteed for accuracy.