



1/15 Herbert Street St Leonards, NSW



## Space, style, resort facilities and 300m to rail

INSPECT THURSDAY 10:45 - 11:15AM & SATURDAY 11:45 - 12:15PM

Placed within the landmark 'Oasis' complex with an indoor heated pool, two spas, a sauna and a fully-equipped gymnasium, this impressive security apartment delivers the ultimate lifestyle package for executives, downsizers or families in a super-central address. Exceptionally bright and spacious, comfortably modern and extending to a wide covered balcony, it is only footsteps to Royal North Shore Hospital and cafes, a three minute stroll of St Leonards Railway Station and a five minute wander to shopping and Coles at The Forum.

### Features:

- Spacious light-filled living space with a defined dining area and leafy outlook
- Glass sliding doors open to an extra-wide covered entertainers' balcony
- Large kitchen with a gas cooktop and dishwasher offers the option to update
- Spacious bedrooms with built-ins open to the balcony, the main has an ensuite
- Modern light neutral themed bathrooms, separate shower and bath in the main
- Separate internal laundry with dryer, linen cupboard

### Inspect:

Thursday, 19th September 2024 10:45 - 11:15  
Saturday, 21st September 2024 11:45 - 12:15

### Auction:

26/09/2024 05:30 pm

### Price:

Auction Guide \$925k

**Council Rates:** \$377.00 p/q

**Water Rates:** \$172.00 p/q

**Strata Rates:** \$1,866.00 p/q



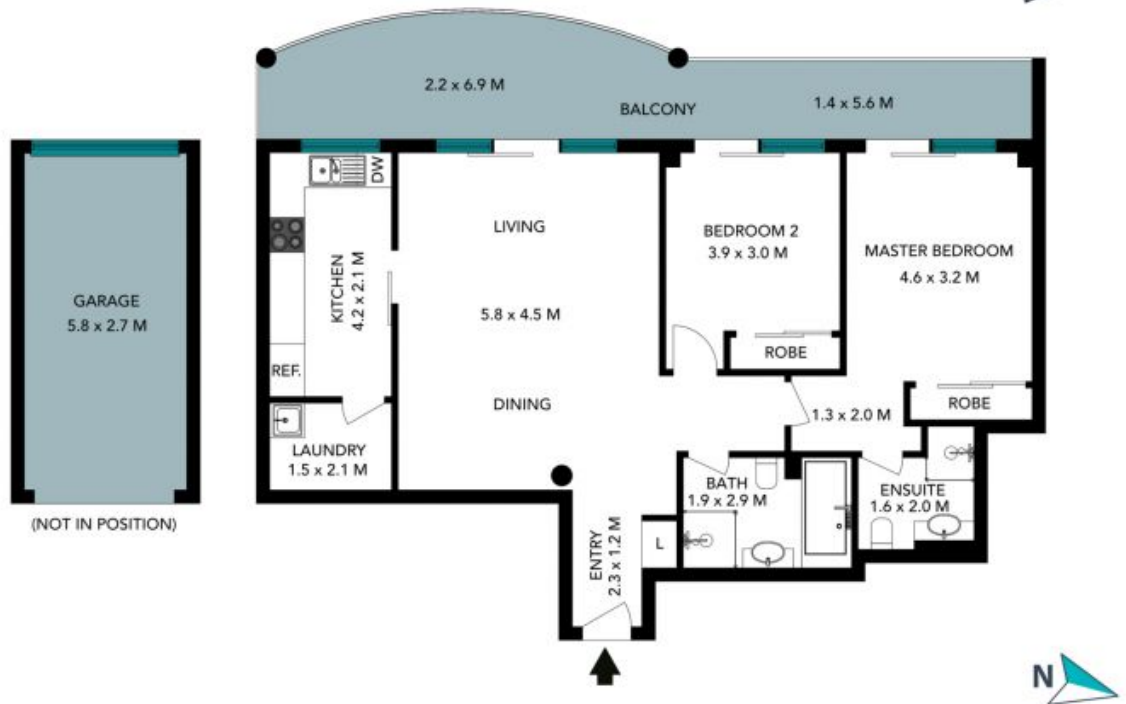
**David Hill**

0411 491 122



**Ruby Johnson**

0432 869 227



The floor plan is not to scale, measurements are indicative and in metres. Exterior elements are not in position. Plans should not be relied on, interested parties should make and rely on their own enquiries. All other information provided has been collected from reliable sources but cannot be guaranteed for accuracy.

1/15 Herbert Street  
St Leonards

STONE



The floor plan is not to scale; measurements are indicative and in metres. All features included in this 3D plan are for inspiration purposes only. This is not an exact replica of the property or the position of exterior elements. Plans should not be relied on. Interested parties should make and rely on their own enquiries.