



9A Bedford Street Willoughby, NSW



Ready to enjoy modern living in central village location

Presenting impressive modern comfort, this fully renovated and extended character home offers easy living across two generous levels. Families will love the spacious bedrooms, designer bathrooms, and European appliances in the custom kitchen. Downsizers can enjoy low maintenance without compromising on lifestyle.

Basking in the warmth of a sunny yet private north to rear orientation featuring indoor-outdoor living and entertaining areas. Known for its outstanding convenience the welcoming location is a leisurely level stroll to High Street shops, eateries, and parks. Central to Willoughby Public School, Willoughby Girls High and City buses.

- Double brick character fully updated and extended for easy family living
- Sensational sense of light and space throughout a fluent in-out layout
- Light-filled living and dining with skylight, bifold doors integrate garden
- Custom kitchen, cleverly designed storage, waterfall edge island breakfast bar
- Smeg gas cooktop and two electric ovens, stone benchtops
- Four bedrooms, three extra-large doubles with built-in robes, fourth/study

Inspect:

Saturday, 21st September 2024 11:30 - 12:00

Price:

Guide \$2,950,000 - \$3,200,000

Council Rates: \$423.38 p/q

Water Rates: \$172.79 p/q



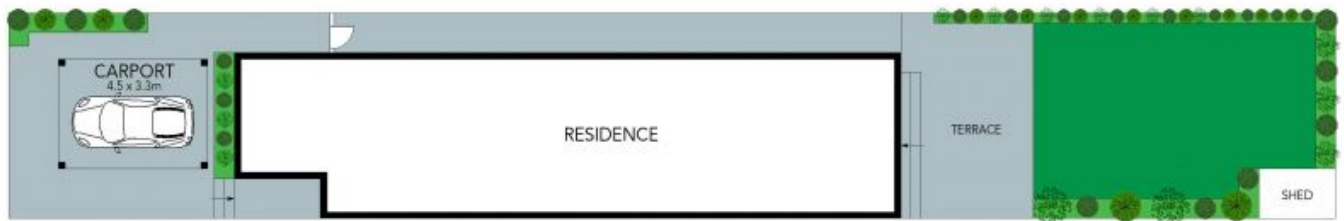
Max Ma

0468 398 868

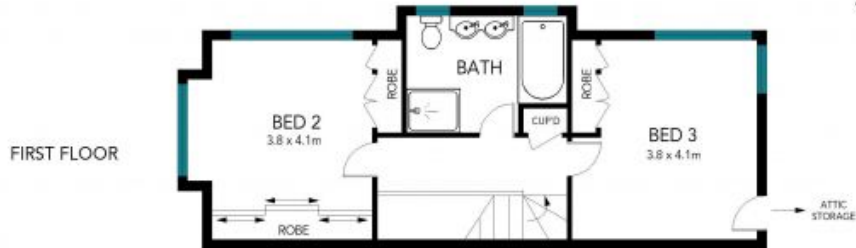


Jill Henry

0416 493 555



SITE PLAN



FIRST FLOOR



GROUND FLOOR

The floor plan is not to scale; measurements are indicative and in metres. Exterior elements are not in position. Plans should not be relied on. Interested parties should make and rely on their own enquiries.
The floor plan is not to scale; measurements are indicative and in metres. Exterior elements are not in position. Plans should not be relied on. Interested parties should make and rely on their own enquiries. All other information provided has been collected from reliable sources but cannot be guaranteed for accuracy.



9A Bedford Street, Willoughby

