



60 Evergreen Avenue Bradbury, NSW

3 1 1

Location, location, location

This neat and tidy entry level three-bedroom brick veneer home is situated on a generous 575.4m² block in the heart of Bradbury. Recently freshly painted, this well-maintained property is perfect for those looking for comfort and convenience. The main bedroom and second bedroom both feature built-in robes, providing ample storage space. The bathroom includes both a bathtub and a shower, and the separate toilet is conveniently located in the laundry.

The home boasts a practical kitchen and dining area, ideal for family meals and entertaining. Outside, you'll find a secure lock-up garage, adding extra storage and parking space. This home offers a great opportunity for first-home buyers, downsizers, or investors looking for a move-in ready property in a fantastic location.

Features:

- 3 bedroom brick veneer home
- Separate toilet in laundry

Inspect: Saturday, 19th October 2024 1:30 - 2:00

Price: \$852,000



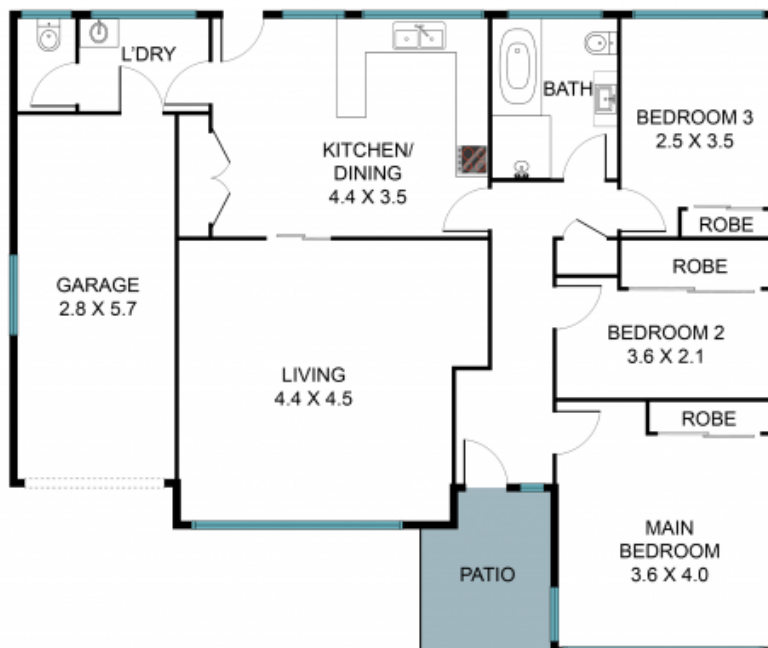
Gary Luke

0418 451 105



Kaitlin Hall

0404 529 516



60 Evergreen Ave, Bradbury NSW 2560



The floor plan is not to scale, measurements and in metres. Exterior elements are not in position.
Plans should not be relied on. Interested parties should make and rely on their own enquiries.
All other information provided has been collected from reliable sources but cannot be guaranteed for accuracy.