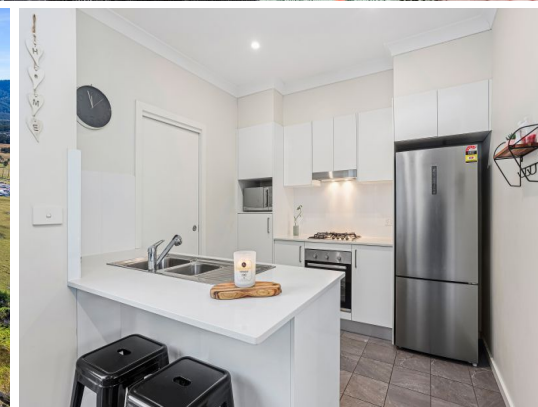
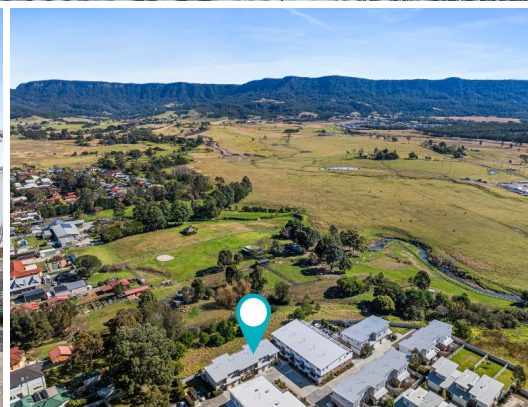


STONE



3/36 Avondale Road Avondale, NSW

3

1

1

SOLD BY STONE REAL ESTATE | NEIL WEBSTER & YENSON MUI

Modern townhouse nestled in serene rural address

Embracing tree lined mountain outlooks from a tranquil rural setting, this stunning townhouse promises an attractive lifestyle of contemporary peace. It's positioned in a quiet, well maintained complex that offers low strata fees, revealing an exciting opportunity for first homebuyers, young families and investors alike. The home is only moments from local schools, Shopping Mall and train station.

- Light filled interiors include open living and dining area extending outdoors
- Private rear courtyard captures gorgeous leafy views, perfect for entertaining
- Modern stone kitchen has gas cooktop, stainless appliances and ample cabinetry
- Accommodation of three good sized bedrooms appointed with built-in wardrobes
- Stylishly presented family bathroom provides separate bathtub and glass shower
- Other features comprise large windows, air conditioning, extra w/c plus storage
- Close to local parklands, shops, eateries, Lake Illawarra and the M1 motorway



Neil Webster

0439 028 748



Yenson Mui

0421 882 541

3/36 Avondale Road
Avondale



The site plan and floor plan are not to scale; measurements are indicative and in metres. Bushes and trees are placed for illustration purposes. Plans should not be relied on. Interested parties should make and rely on their own enquiries. All other information provided has been collected from reliable sources but cannot be guaranteed for accuracy.