



107/47-49 The Esplanade Ettalong Beach, NSW

2 2 1

### Luxury apartment with water views

A modern, luxury apartment right in the heart of Ettalong Beach. Situated in the exclusive 'Atlantis' building is this beachfront apartment with beautiful waterviews over Ettalong Beach and across to Lion Island.

Ettalong shops, cafes and restaurants at your fingertips with transport, train station and M1 freeway nearby. Infinity pool in the complex with stunning, uninterrupted views to Barrenjoey lighthouse.

- Open living and kitchen with water views
- Two bedrooms with built in robes and ensuite to main
- Ducted air conditioning throughout
- Secure building with intercom and fob key access; Two lifts
- Stylish apartment with only the best finishes
- Tiled flooring throughout the living areas, carpeted bedrooms
- Natural gas heating option and outdoor BBQ connection
- Water connection on the balcony

**Inspect:** Saturday, 21st September 2024 12:30 - 1:00

**Price:** Contact Agent  
**Council Rates:** \$1,169.97/year (approx)  
**Water Rates:** \$1,063.99/year (approx)  
**Strata Rates:** \$1,932.00 p/q



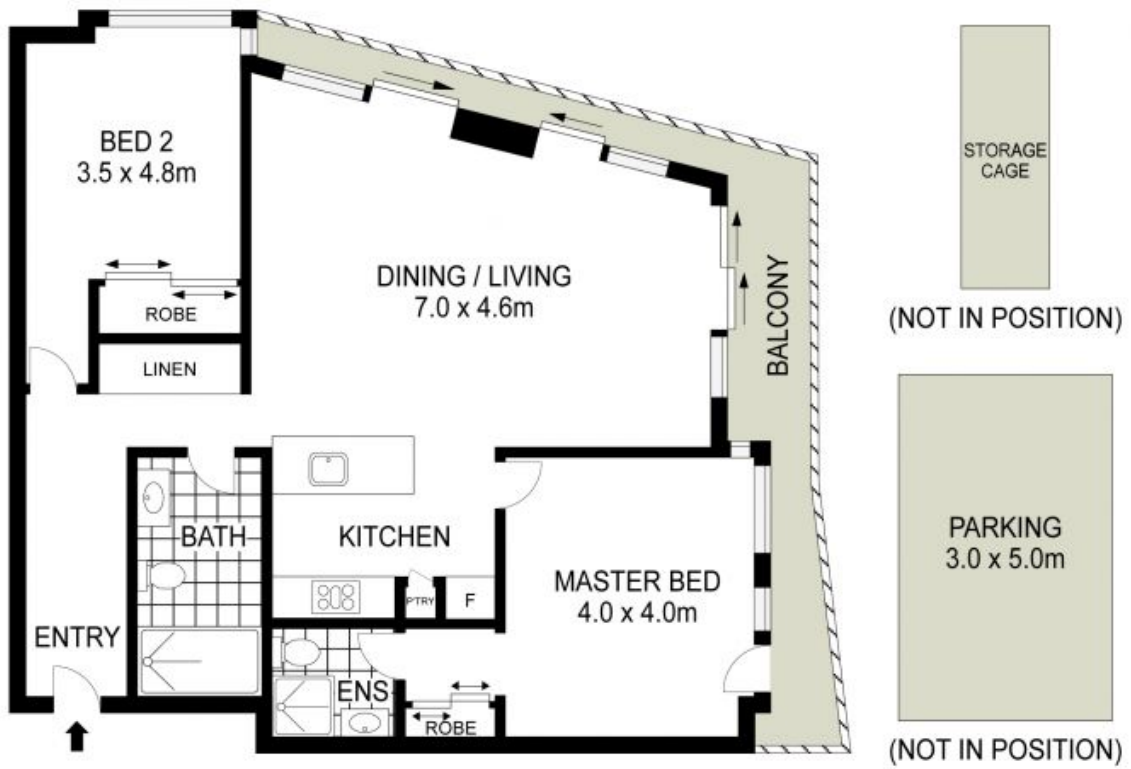
**Christel Renton**

0417 208 314



**Helen Hughes**

0418 220 622



The floor plan is not to scale, measurements are indicative and in metres. Exterior elements are not in position. Plans should not be relied on. Interested parties should make and rely on their own enquiries. All other information provided has been collected from reliable sources but cannot be guaranteed of accuracy.

