



209 Smiths Road Dooralong, NSW



## OPEN HOME CANCELLED ON SATURDAY

Discover your dream lifestyle at this property nestled in the serene Dooralong Valley. Spanning 32 acres, this private retreat offers a blend of tranquility and functionality.

The comfortable 4 bedroom accommodation allows you to relax and enjoy the surroundings while you build your dream home. A separate studio awaits your finishing touches, offering potential for a guest house, artist's retreat, or additional living space.

Horse enthusiasts will appreciate the 10 stables, round yard, and multiple paddocks, providing ample space and facilities for your equine friends.

Conveniently located close to Tuggerah westfield, schools, Train Station and M1 freeway are just 10 minutes away. Don't miss your opportunity to secure this rural hideaway.

DISCLAIMER: This advertisement contains information provided by third parties. While all care is taken to ensure otherwise, Stone Real Estate Tumby Umbi, Stone Real Estate Berkeley...

Price:

New To Market



**Scott Wall**

0413 965 616

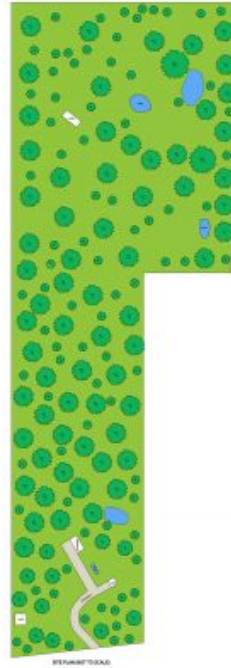
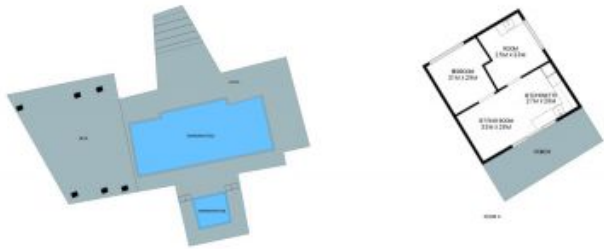


**Kaela Wall**

0434 726 944



209 Smiths Road  
Dooralong



LAND SIZE: 13.67 ha

PLEASE NOTE: These Floorplan + Site Plans have been generated for marketing purposes and are to be used as a guide only. While all care is taken, no guarantee can be given in respect of accuracy, sizes and dimensions are approximate, actual may vary.

