



2/55 Flathead Road Ettalong Beach, NSW



### Immaculate and private villa

Freshly renovated throughout with quality fixtures and finishes is this modern low maintenance villa ideally located in the Fish streets of Ettalong Beach. The spacious and private courtyard comes with its own hot and cold outdoor shower! For those looking to downsize, invest or secure your 1st home, this won't last long!

- Open plan living and dining flowing to outdoor area
- Small and quiet complex of three
- Large landscaped courtyard offering privacy
- Two bedrooms with built-ins and fans
- Single lock up garage, remote access, back door to courtyard
- 2nd toilet and sink in the rear of the garage
- Split system air-conditioning and fan in living space
- Walk to shops, beachfront and Palm Beach Ferry

**Price:** \$800,000 - \$850,000

**Council Rates:** \$331.90 p/q

**Water Rates:** \$207.63 p/q

**Strata Rates:** \$720.00 p/q



**Christel Renton**

0417 208 314

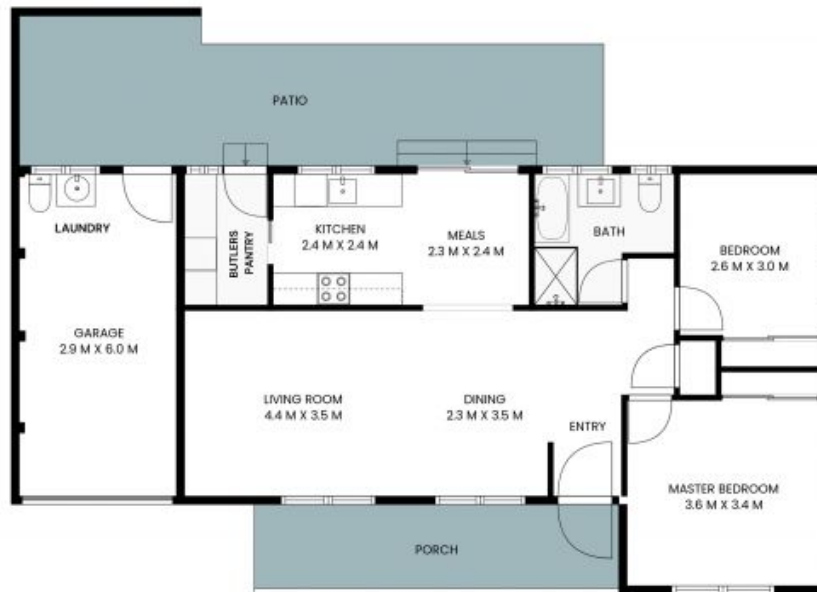


**Christel Renton**

0417 208 314



2/55 Flathead Road  
Ettalong Beach



INTERNAL: 94sqm  
EXTERNAL: 37sqm

PLEASE NOTE: These Floorplan + Site Plans have been generated for marketing purposes and are to be used as a guide only.  
While all care is taken, no guarantee can be given in respect of accuracy; sizes and dimensions are approximate, actual may vary.

