



20A Mimiwali Drive Bonville, NSW

4 2 2

Modern Family Home

Situated in the popular "Sawtell Ridge Estate" is this light & bright family home with elevated views and positioned opposite Bongil Bongil National Park. Features include a large main bedroom with walk in robe and spacious ensuite, modern kitchen with stainless steel appliances & gas cooktop, open plan living with reverse cycle air conditioning and a generous covered entertaining deck. Downstairs offers the flexibility of a 4th bedroom or media room and a remote double lockup garage with ample storage. Conveniently located just a short drive from Sawtell's main street and stunning beaches.

Council rates: \$785.75pq approx.

Price: \$899,000 - \$929,000

Council Rates: \$785.75 p/q

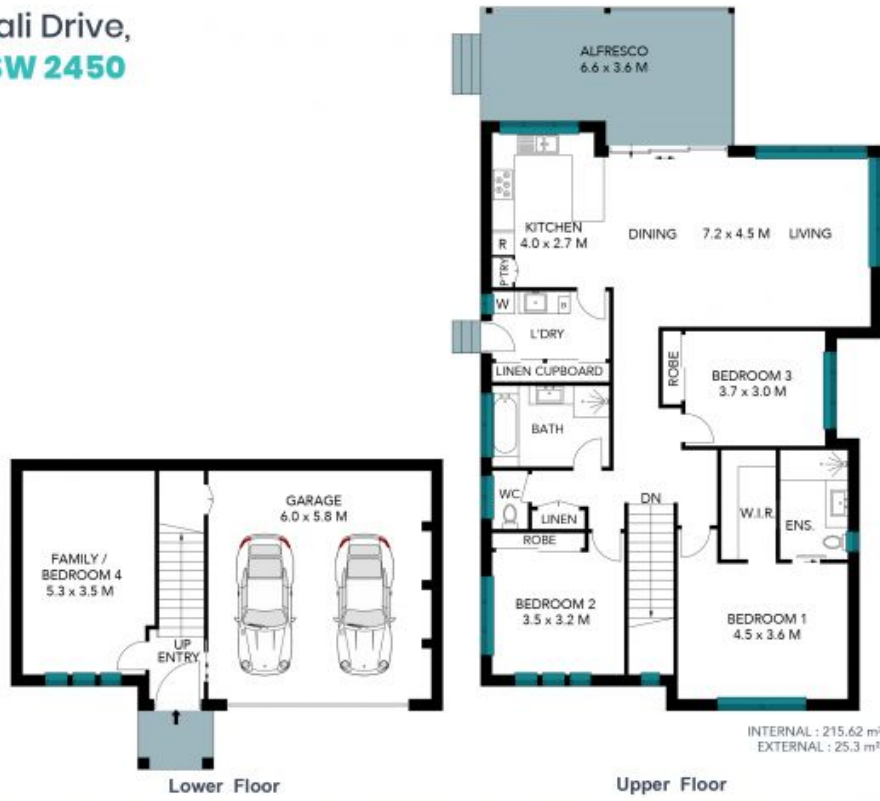


Luke Wenban

0418 165 979

20A Mimiwali Drive,
Bonville NSW 2450

STONE



The site plan and floor plan are not to scale; measurements are indicative and in metres. Bushes and trees are placed for illustration purposes. Plans should not be relied on. Interested parties should make and rely on their own enquiries. All other information provided has been collected from reliable sources but cannot be guaranteed for accuracy.