

STONE



10 Kakadu Street Pimpama, QLD

4 

2 

2 

## Central suburban location, all you desire within close proximity...

Located in the prestigious Gainsborough Greens community of Pimpama with no body corporate levies and all you desire within minutes, this breathtakingly stunning steel-frame Metricon built residence meets all family needs with a refined sense of elegance and sophistication. Completed in 2022, every aspect of this contemporary home, from its striking facade with unrivalled street appeal to its equally impressive, sun-drenched living zones, showcases remarkable designer style, generous proportions, and meticulous attention to detail.

...

The fully equipped stone kitchen is a chef's dream, highlighted by the Butler's Pantry with ample storage and prepping benchtop, but also offers by a 900mm oven and cooktop plumbed fridge cavity and under-bench power points ...

...

Modern comforts abound in this home featuring a powder room, lofted 2.7m ceilings, MyAir temperature and zone-controlled ducted air-con/heating, plush carpets with mould resistance underlay, oversized energy-efficient glazed windows, deluxe wash & wear low sheen paint f...

Price:

Offers Over \$1,040,000



**Shane Evans**

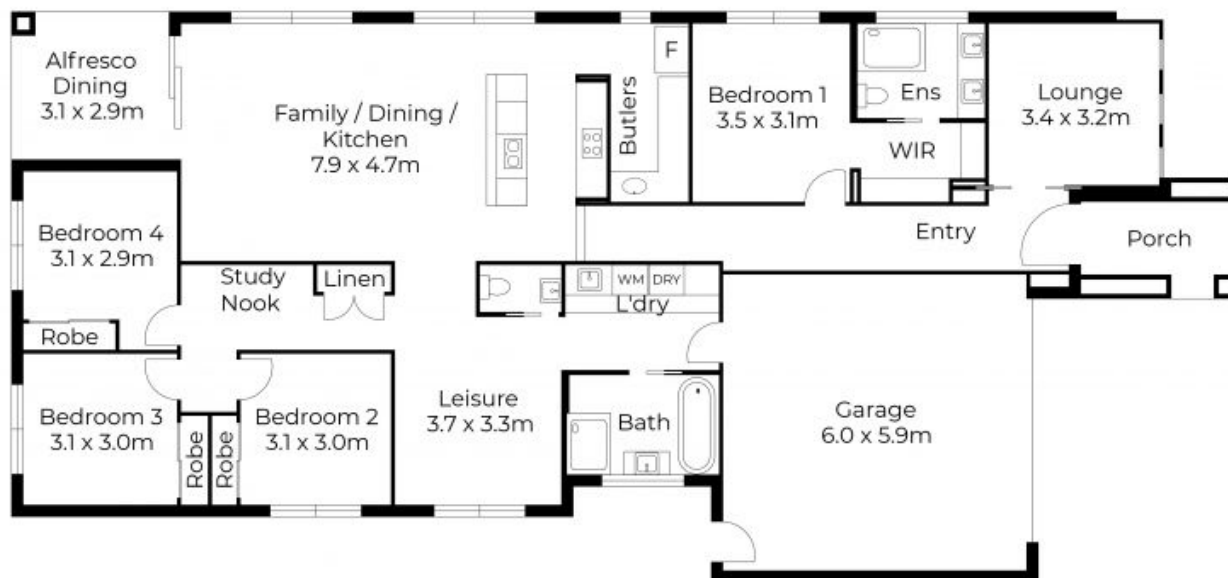
0416 193 663



**Marcello Giardina**

0468 611 953

[www.stonerealestate.com.au](http://www.stonerealestate.com.au)



Floor plans and site plans are for illustrative purposes only. They are not part of any legal document or title and are subject to errors, omission, and inaccuracies. Whilst every attempt has been made to ensure the accuracy of this plan, measurements of doors, windows, rooms, cupboards etc are approximate only.

APPROXIMATE AREA  
LIVING AREA : 174m<sup>2</sup>  
TOTAL AREA : 228m<sup>2</sup>



Floor plans and site plans are for illustrative purposes only. They are not part of any legal document or title and are subject to errors, omission, and inaccuracies. Whilst every attempt has been made to ensure the accuracy of this plan, measurements of doors, windows, rooms, cupboards etc are approximate only.

APPROXIMATE AREA  
 LIVING AREA : 174 m<sup>2</sup>  
 TOTAL AREA : 228 m<sup>2</sup>