



22 Dorman Crescent Lindfield, NSW

5

3

2

Modern family-size proportions all meticulously maintained

Delivering an outstanding level of space and comfort, this c.2009 entertainer is designed to capture abundant natural light while offering exceptional privacy and tranquillity. Presented on a 973sqm approx. landscaped parcel with the 400sqm approx. layout set across two spectacular levels.

- 400sqm approx. fluent interior layout brimming with natural light all year
- Two spacious levels, soaring entry with grand staircase and chandelier
- Integrated formal living and dining versatile for elegant entertaining
- Casual living and dining with easy flow to terrace and manicured garden
- Family room with wraparound windows that drink in the leafy view
- Open kitchen, breakfast bar, gas cooktop, oven, dishwasher, w.i. pantry
- Five king-size bedrooms, multi-gen downstairs + bathroom, built-in robes
- Upstairs bedrooms flank a TV room retreat that laps up the north sunshine

Inspect:

Saturday, 21st September 2024 12:30 - 1:00
Saturday, 28th September 2024 12:30 - 1:00

Price:

For Sale \$3,900,000 to \$4,200,000



Steven Kourdis

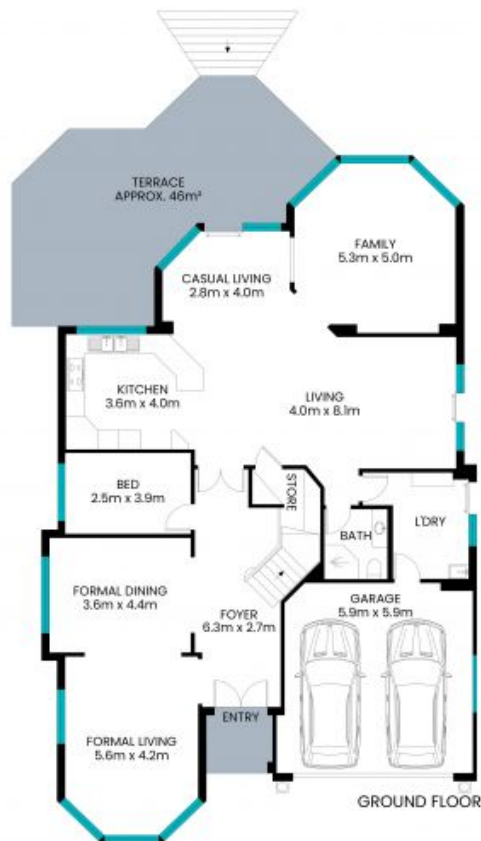
0402 555 675



Matt Payne

0435 825 242

22 Dorman Crescent
Lindfield



Internal & Balcony area: 355m²
Terrace area: 53m²
Total area: 408m²

The site plan and floor plan are not to scale; measurements are indicative and in meters. Bushes and trees are placed for illustration purposes. Plans should not be relied on. Interested parties should make and rely on their own enquiries. All other information provided has been collected from reliable sources but cannot be guaranteed for accuracy.