

7 Joseph Esplanade Mardi, NSW



The Ultimate Family Home - Space, Style & Convenience.

Welcome to this expansive single level residence nestled in a sought-after cul-de-sac opposite serene reserve in Mardi.

Beautifully maintained, the four bedroom home features spacious living areas that effortlessly flow into a private, covered outdoor entertaining space. Surrounded by manicured gardens and flat, usable yard space - perfect for families and pets to enjoy, this property offers a peaceful sanctuary within a fully fenced yard.

Property Highlights:

- Master bedroom with two walk-in robes and ensuite with double basins.
- 4 bedrooms all with built-ins throughout.
- Main bathroom features bath, shower and separate toilet.
- Gourmet kitchen with stainless steel appliances, gas cooktop and step-in pantry.
- Open plan living and dining space plus additional family room.
- Private undercover alfresco and fully fenced backyard.
- Zoned ducted air-conditioning.

Price: \$1,050,000



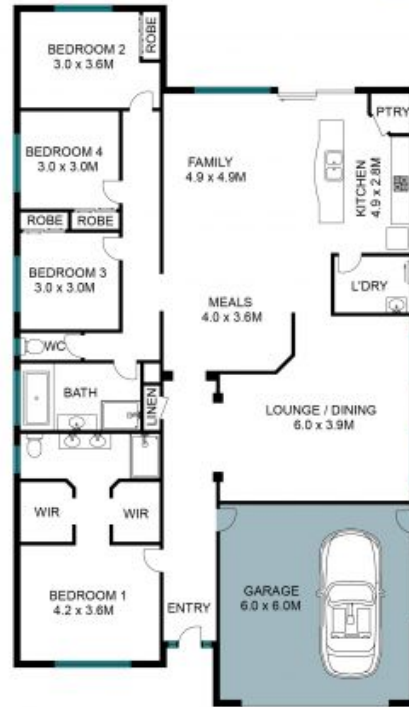
Alyce Lewis

0423 950 626

7 Joseph Esplanade,
Mardi



Site Plan



The site plan and floor plan are not to scale; measurements are indicative in meters. Bushes and trees are places for illustration purposes. Plans should not be relied on. Interested parties should make and rely on their own enquiries. All other information provided has been collected from reliable sources but cannot be guaranteed for accuracy.