



14 Spoonbill Avenue Woronora Heights, NSW



Spacious family sanctuary enveloped in natural beauty

Backing onto a stunning bushland reserve, this generously scaled dual level home provides a sought-after family lifestyle of space, privacy and tranquility. It showcases a North East facing aspect and is complemented by a sublime outdoor entertaining zone, a practical floorplan and welcoming interiors. It's ideally set just moments to local shops, schools, parks and bush walking tracks.

- Generous open plan living and dining zone plus a handy second lounge upstairs
- Multiple covered balconies plus terrace with privacy screens
- Stunning in-ground pool plus a sun drenched front yard perfect for the kids
- Bright and airy modern kitchen offers five-burner gas cooktop, dishwasher, ample storage
- Four upper level double bedrooms fitted with built-ins, one opens onto balcony
- Floor-to-ceiling windows invite the outside in, stunning timber flooring
- Solar panels, integrated media throughout plus ample lockable storage space
- Double lock-up garage opens to the rear plus additional off street parking

Inspect: Saturday, 21st September 2024 1:00 - 1:30

Price: For sale - Contact agent

Council Rates: \$410.60 p/q

Water Rates: \$172.79 p/q



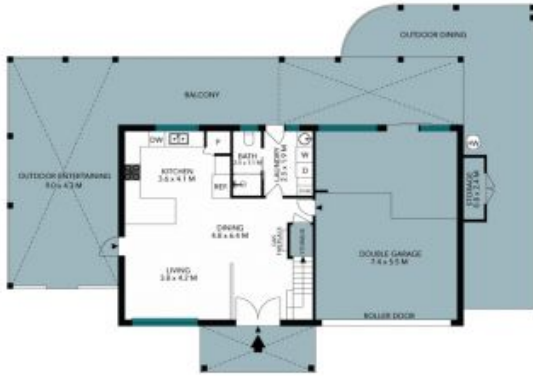
Rhys Christofa

0415 684 877



Brayden Watson

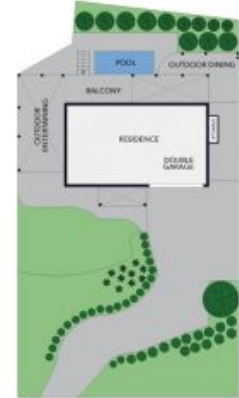
0415 122 733



Ground Floor



First Floor



Site Plan



The site plan and floor plan are not to scale; measurements are indicative and in metres. Bushes and trees are placed for illustration purposes. Plans should not be relied on. Interested parties should make and rely on their own enquiries. All other information provided has been collected from reliable sources but cannot be guaranteed for accuracy.

14 Spoonbill Avenue
Woronora Heights



Ground Floor



First Floor



The floor plan is not to scale, measurements are indicative and in metres. All features included in this 3D plan are for inspiration purposes only. This is not an exact replica of the property or the position of exterior elements. Plans should not be relied on. Interested parties should make and rely on their own enquiries.