



B303/433-439 Princes Highway Rockdale, NSW



As-new house-sized unit in village hub

Enjoy the proportions of a house, without the maintenance, right in the centre of Rockdale village.

This near-new apartment, within the landmark ANEW building, offers stylish and ultra-convenient living, with Rockdale library and cafes across the road, plus express trains and grocers mere footsteps away.

An east-facing balcony, with a pleasant district outlook, will elevate your morning coffee, and seamlessly extends the already sizeable open-plan living zone.

With three bedrooms plus a study nook, and two secure car spaces, this is a highly desirable, value-packed offering just 2.2km from the beach and within 12km of the CBD.

- Three bedrooms with built-ins, plus ensuite; separate study nook

- Ceiling-height doors and wrap-around glazing connects to east-facing balcony with distri...

Inspect:

Saturday, 21st September 2024 1:25 - 1:55

Price:

FOR SALE \$850,000 to \$920,000

Council Rates: \$282.30 p/q

Water Rates: \$268.30 p/q

Strata Rates: \$1,268.00 p/q



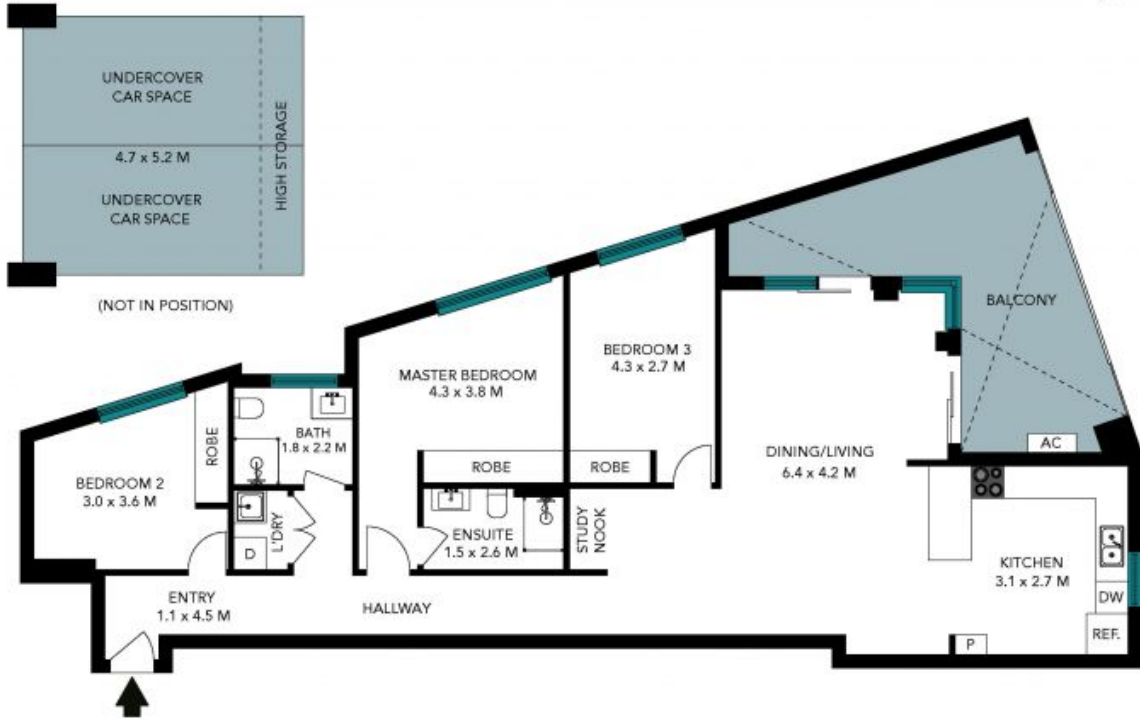
George Kambouroglou

0422 421 111

B303/433-439 Princes Highway
Rockdale



The floor plan is not to scale; measurements are indicative and in metres. All features included in this 3D plan are for inspiration purposes only. This is not an exact replica of the property or the position of exterior elements. Plans should not be relied on. Interested parties should make and rely on their own enquiries.



The floor plan is not to scale, measurements are indicative and in metres. Exterior elements are not in position. Plans should not be relied on, interested parties should make and rely on their own enquiries. All other information provided has been collected from reliable sources but cannot be guaranteed for accuracy.