

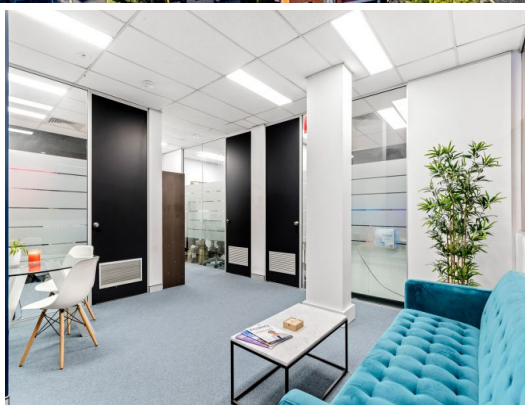
SYDNEY CBD

HURSTVILLE STATION

RAILWAY PARADE

WESTFIELDS

STONE
COMMERCIAL



Suite 8/5 Railway Parade Hurstville, NSW

KICK START YOUR COMMERCIAL PORTFOLIO

- ? Multiple income streams x 2 suites
- ? Positioned within the heart of Hurstville CBD
- ? Invest or Occupy

Stone Commercial as the exclusive sales agents are pleased to present to market, Suite 8a/ 5 Railway Parade Hurstville.

This presents an opportunity to acquire a prime Commercial asset positioned within a stone throw to Hurstville bustling retail / commercial precinct.

The investment opportunity benefits from the following key attributes:

- Multiple Income Streams
- Flexible Lease terms, allowing investor to re-structure or occupy
- Secure Onsite Parking
- Strategically positioned within the bustling commercial / retail hub of Hurstville CBD

Inspections by appointment only,

Price: For Sale - Contact Agent
Council Rates: \$849.00/year (approx)
Water Rates: \$179.14 p/q
Strata Rates: \$3,667.05 p/q



Paul Di Mauro

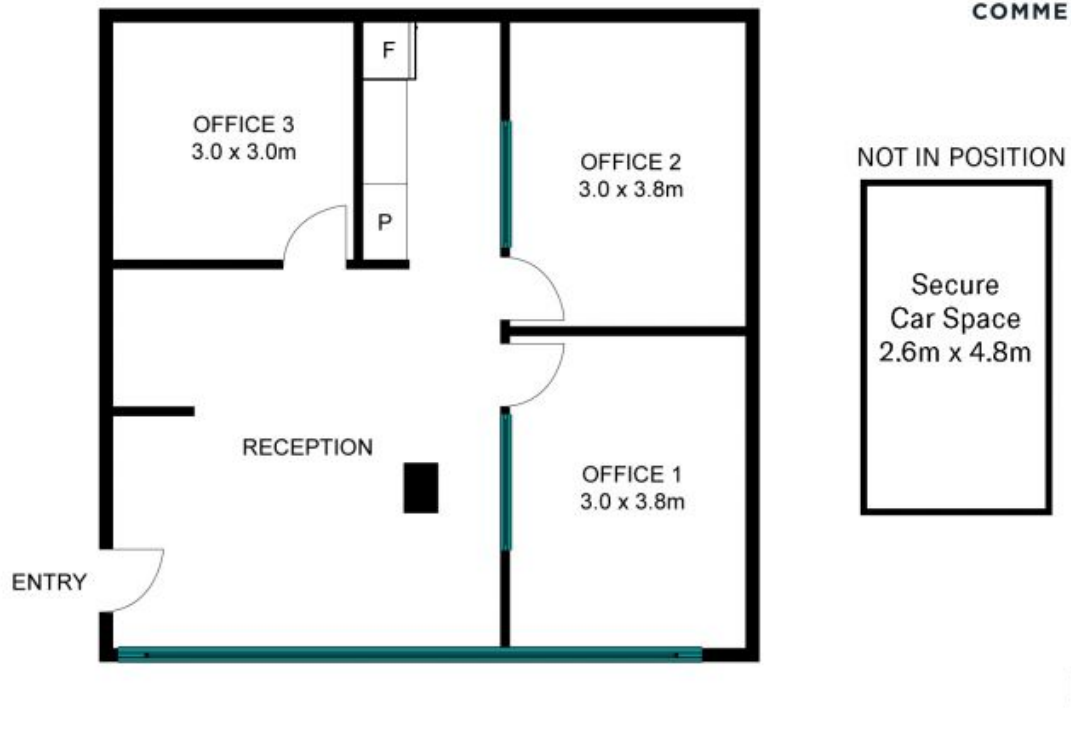
0431 099 976



John Bacic

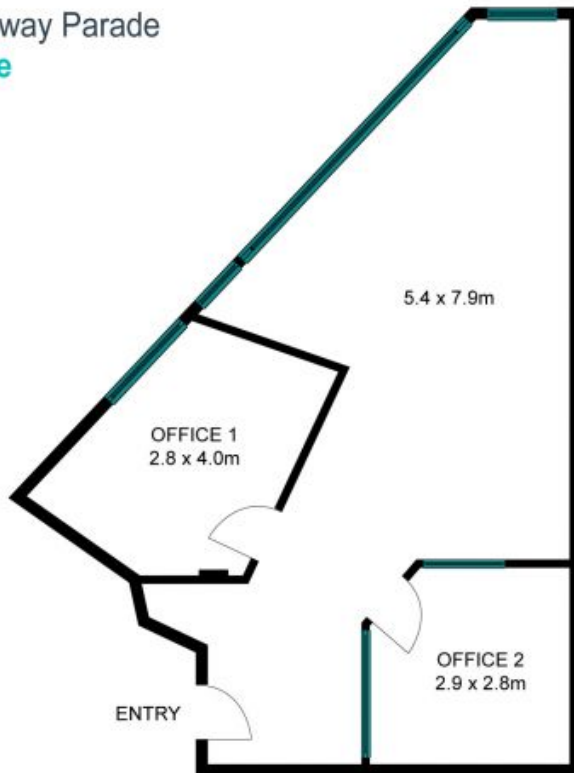
0405 202 202

8/5 Railway Parade
Hurstville

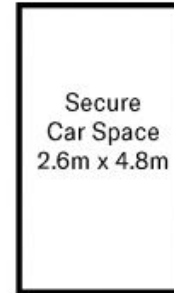


The floor not to scale. Measurements are indicative and in meters. Exterior elements are not in position. Plan should not be relied on. Interested parties should make and rely on their own requests. All other information provided has been collected from reliable sources but cannot be guaranteed for accuracy.

8A/5 Railway Parade
Hurstville



NOT IN POSITION



The floor not to scale. Measurements are indicative and in meters. Exterior elements are not in position. Plan should not be relied on. Interested parties should make and rely on their own requests. All other information provided has been collected from reliable sources but cannot be guaranteed for accuracy.