



11/1-3 Belgian Street Westmead, NSW 3 2 1

Double Brick Three Bedroom Apartment

Set within a low-rise boutique building, offering 142sqm of living space, this double-brick apartment presents a fantastic opportunity for first-home buyers or investors. It is ideally placed in a high-growth location, footsteps to Westfield, trains & upcoming light rail, local shops, and Parramatta Park.

- Freshly Painted & New Floorboards Throughout
- Open plan living & dining area adjoins to large 24sqm balcony, facing a private and tree filled backyard.
- Functional kitchen has large benchtops, gas cooktop, and ample cabinetry
- Three good-sized bedrooms with Built in Robes, master bedroom with ensuite & private balcony
- Large undercover entertaining area
- Internal Laundry, Single Lock Up Garage plus ample parking for visitors
- Secure block with intercom access
- 5 minutes' walk to Parramatta High School, 15 minutes to Parramatta Station

Inspect: Saturday, 21st September 2024 10:00 - 10:20

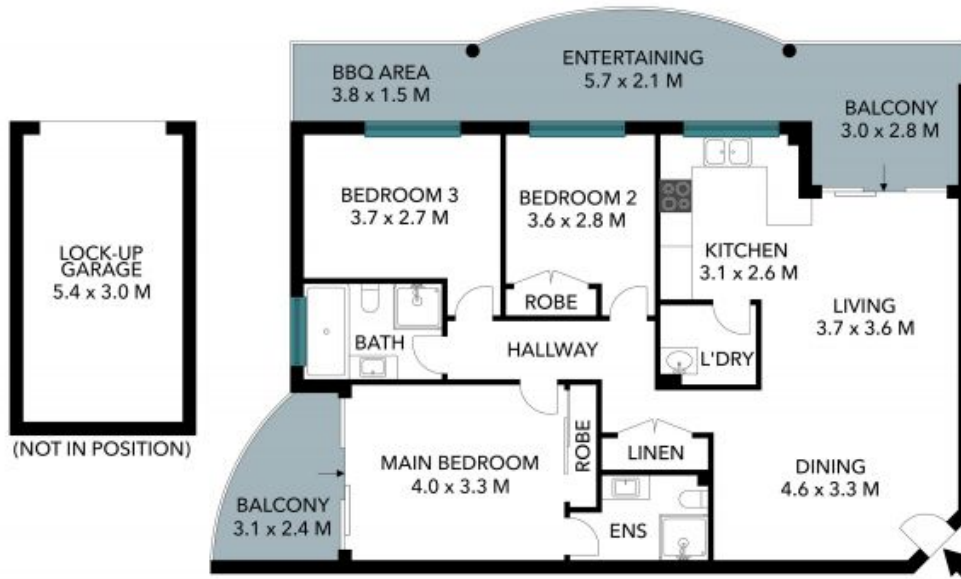
Price: \$680,000-\$720,000



Simar Gill
0410 312 242



Chris Kypreos
0432 354 445



The floor plan is not to scale; measurements are indicative and in metres. Exterior elements are not in position. Plans should not be relied on. Interested parties should make and rely on their own enquiries. All other information provided has been collected from reliable sources but cannot be guaranteed for accuracy.

11/1-3 Belgian Street
Westmead

STONE



The floor plan is not to scale; measurements are indicative and in metres. All features included in this 3D plan are for inspiration purposes only. This is not an exact replica of the property or the position of exterior elements. Plans should not be relied on; interested parties should make and rely on their own enquiries.