



124 Woodbury Park Drive Mardi, NSW



Blank Canvas Opportunity in Ultra-Convenient Locale!

Welcome to this single level four bedroom home nestled in an ultra-convenient location. Perfectly positioned with easy access to all amenities featuring serene outlooks and a beautiful northern aspect. This residence is ideal for those seeking a blank canvas opportunity in a quality neighbourhood.

The multiple living zones provide ample space for relaxation, entertainment, or even a home office setup. Each room is thoughtfully designed to maximise functionality without compromising on style, offering a blend of comfort and practicality.

Property Highlights:

- Master bedroom with walk-in robe and ensuite.
- 4 bedrooms with built-in wardrobes.
- Multiple living zones including open plan loungeroom, dining, formal dining or home office, additional family room.
- Enclosed sprawling sunroom with expansive windows allowing plenty of natural light.
- Kitchen with breakfast bar, gas cooking and step-in pantry.
- Low maintenance courtyard and gardens.

Price:

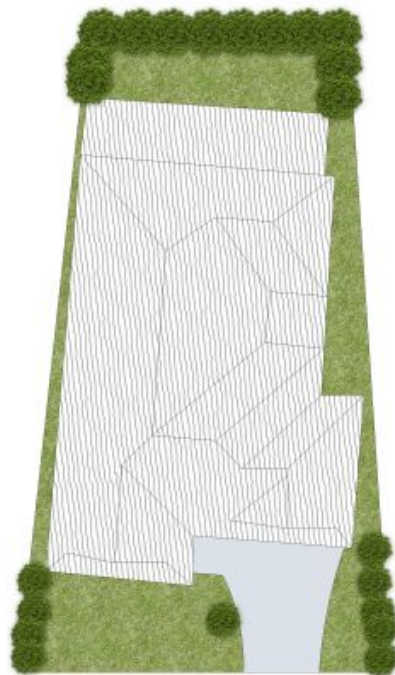
Contact Agent



Alyce Lewis

0423 950 626

124 Woodbury Park Drive
MARDI



INTERNAL: 183sqm
EXTERNAL: 63sqm

PLEASE NOTE: These Floorplan + Site Plans have been generated for marketing purposes and are to be used as a guide only. While all care is taken, no guarantee can be given in respect of accuracy; sizes and dimensions are approximate, actual may vary.

