



40 Penderlea Drive West Pennant Hills, NSW



Rare opportunity to secure a premium land holding in a blue chip street

A rare offering on a grand 1,390sqm block with an approx. 29m frontage, this substantial family home is one of the last original homes on the street. This large block has great potential for building your new dream home. Nestled in a blue chip location and once a five acre landholding, the property is the original house after which the street was named . It's a property brimming with endless possibilities. A short drive to local shops and situated in the coveted Murray Farm Public School catchment.

- Located in a quiet, leafy and peaceful neighbourhood
- Set well back with an expansive lawn and an exceptionally wide frontage
- Generous living room featuring tall windows opens to another casual living area
- Spacious rear family and dining room leads onto a sunny entertaining balcony
- Grassed backyard capturing a premier north to rear aspect, great for children
- Original style timber kitchen with Bosch dishwasher and casual dining room
- Comfortable bedrooms, three with BIR's, main has a neat classic ensuite
- Timber floorboards, split system air conditioning and combustion fireplace

Inspect: Thursday, 19th September 2024 2:00 - 2:30
Saturday, 21st September 2024 11:00 - 11:30

Auction: 21/09/2024 04:15 pm

Price: Auction Guide \$2,500,000
Council Rates: \$553.00 p/q
Water Rates: \$171.41 p/q



James Ramsay

0420 665 913

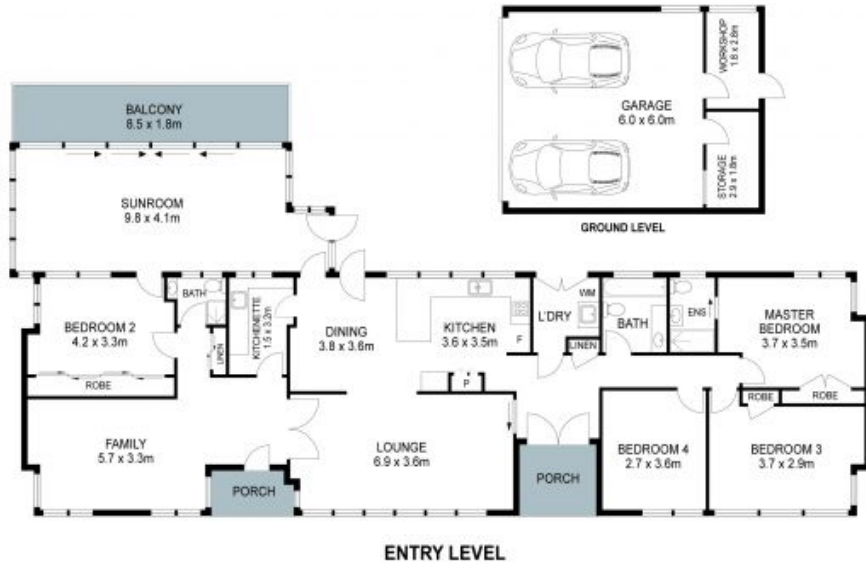


Douglas Kim

0451 509 211

40 Penderlea Drive, West Pennant Hills

4 3 5 1390m²



THIS IS AN ARTIST'S IMPRESSION - ALL DIMENSIONS, LAYOUTS AND TREES ARE APPROXIMATE
ALL INTERESTED PARTIES SHOULD MAKE AND RELY ON THEIR OWN ENQUIRIES

