



65 Simmons Street Enmore, NSW

3 1

Charming terrace unveils sleek modern renovation

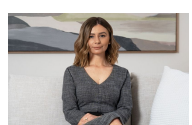
Comprehensively renovated across two inviting levels, this gorgeous residence creates an idyllic city-fringe haven of outstanding quality and convenience. Designed by renowned architect Kitty Lee, it promises warmth, style and indoor/outdoor harmony. Nestled in a peaceful pocket, this home enjoys easy access to an array of amenities including some of the best restaurants and coffee spots around.

- Gorgeous facade and entrance boasts covered front verandah with tessellated federation tiles
- Tasmanian oak timber hallway leads to open plan living zone beneath soaring high ceilings
- Seamless indoor-outdoor entertaining with bi-folds to garden courtyard and retractable awning
- Contemporary kitchen features custom designed cabinetry and 6-seater dining island
- Three bedrooms including upper level retreat with oversized attic storage space
- Ample bespoke storage, European laundry, underfloor ventilation system

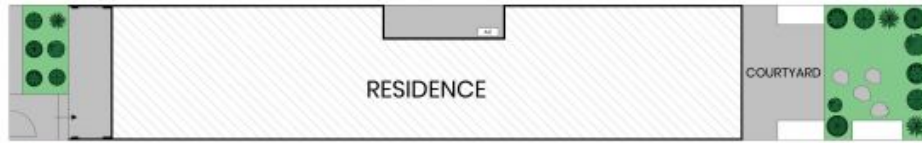
Price: Contact Agent
Council Rates: \$395.00 p/q
Water Rates: \$190.00 p/q



Joseph Tropiano
 0401 002 211



Irma Rinaudo
 0426 240 502



Site Plan



First Floor



Ground Floor



The site plan and floor plan are not to scale; measurements are indicative and in metres. Bushes and trees are placed for illustration purposes. Plans should not be relied on. Interested parties should make and rely on their own enquiries. All other information provided has been collected from reliable sources but cannot be guaranteed for accuracy.