



2702/500 Pacific Highway St Leonards, NSW 1 1

### Finest Apartment in St Leonards

Discover an exceptional living experience in the heart of St Leonards within the prestigious Landmark building, this unit enjoys a sophisticated lifestyle and is perfect for those seeking comfort, convenience, and a touch of elegance.

- Luxurious finishes throughout
- Integrated Miele gas appliances
- Spacious bedroom with built-in wardrobe
- Access to complex amenities including a swimming pool, spa, sauna, cinema, yoga room, virtual golf
- Quality tiled floors and plush carpets
- Convenient access to Balmoral Beach, North Sydney pools, and Sydney Harbour
- Walking distance to Crows Nest village, prestigious schools, train, and future metro station

Price:

Contact Agent



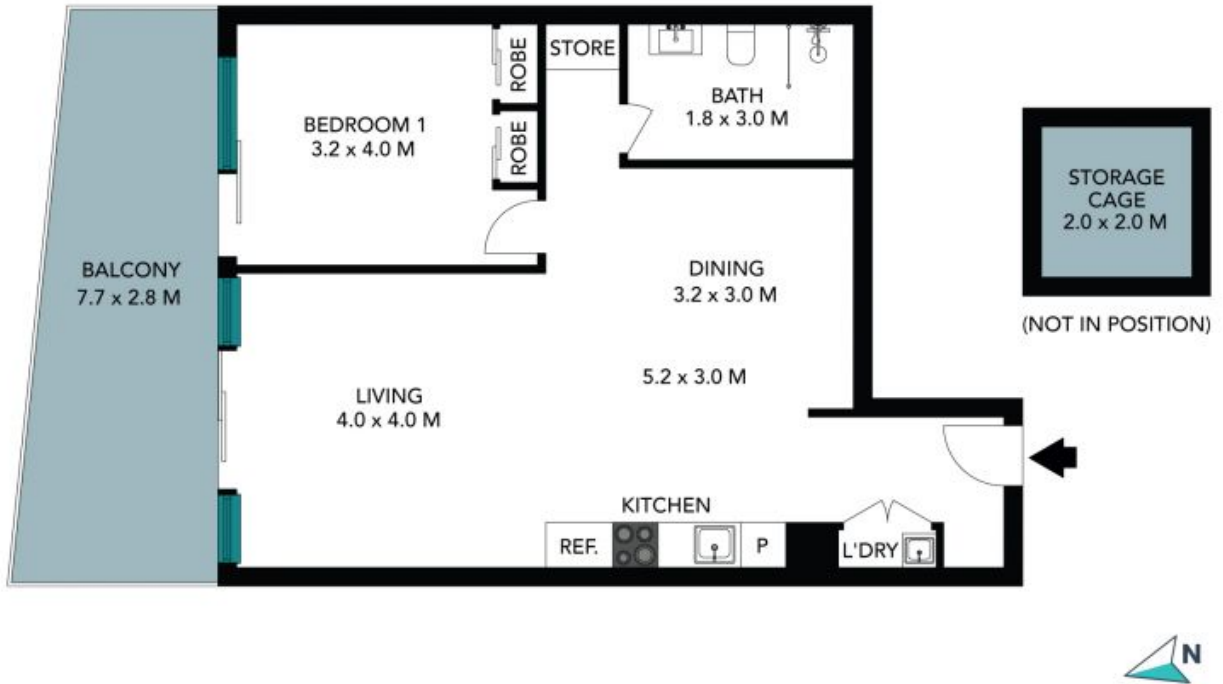
**Li (sammi) Fan**

0415 959 888



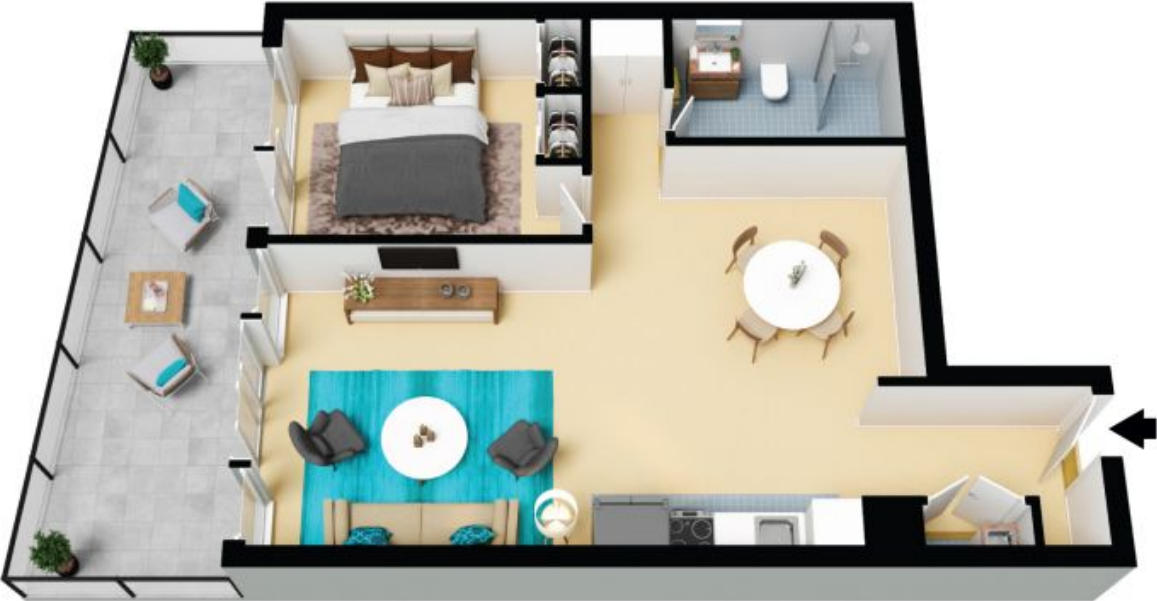
**Damon (zhiping) Shen**

0424718988



The floor plan is not to scale, measurements are indicative and in metres. Certain elements are not in position. Plans should not be relied on. Interested parties should make and rely on their own enquiries. All other information provided has been collected from reliable sources but cannot be guaranteed for accuracy.

2702/500 Pacific Highway  
St Leonards



The floor plan is not to scale; measurements are indicative and in metres. All features included in this 3D plan are for inspiration purposes only. This is not an exact replica of the property or the position of exterior elements. Plans should not be relied on. Interested parties should make and rely on their own enquiries.