

STONE



73 Amalfi Drive Isle Of Capri, QLD



Excellence Personified

Nestled in the heart of the esteemed Isle of Capri on sought-after Amalfi Drive, this residence blends Palm Springs charm with Californian Bungalow inspiration, offering sophistication and unparalleled luxury.

Impeccably crafted by renowned local builders, Alroe, this home features feminine curves and a minimalistic fresh colour palette.

Entertain in style with a captivating pool and spacious lounging deck, seamlessly integrating indoor and outdoor spaces through glass panel doors.

The central courtyard, surrounded by landscaped tropical gardens, creates a relaxing atmosphere, perfect for al fresco dining in the outdoor BBQ area.

Modern kitchen design boasts a butler's pantry connected to the laundry, Smeg appliances, benchtops.

Interior highlights include engineered timber flooring with a feature herringbone design, ...

Inspect:

Saturday, 6th July 2024 12:00 - 12:45
Sunday, 7th July 2024 12:00 - 12:45

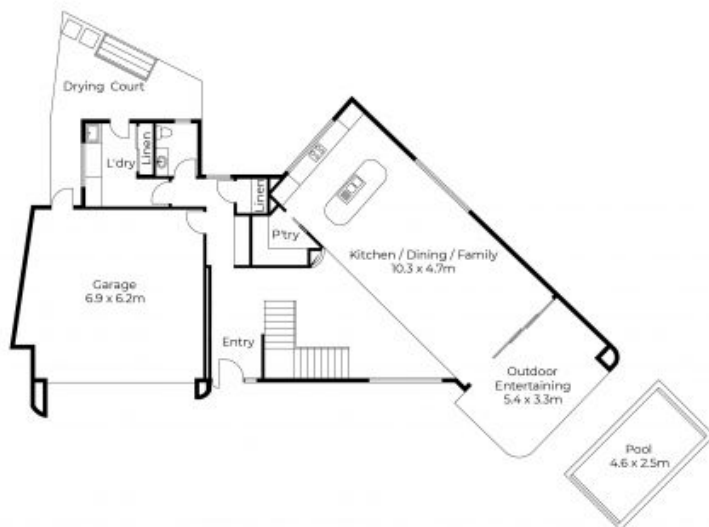
Price:

Auction



Shaun Darcy

0427 742 863



Ground Floor



First Floor



Floor plans and site plans are for illustrative purposes only. They are not part of any legal document or title and are subject to errors, omission, and inaccuracies. Whilst every attempt has been made to ensure the accuracy of this plan, measurements of doors, windows, rooms, cupboards etc are approximate only.

APPROXIMATE AREA
LIVING AREA : 237.9 m²
TOTAL AREA : 303.4 m²