

10/44 Belmore Street Burwood, NSW

1 1 1

Super Location and Convenient in the Centre of Burwood

The Contemporary Apartment is elevated boutique complex with an easy life style and set in the ultra-convenient " Burwood premier central ". This luxuriously appointed residence offers the astute tenants the finest of modern living.

You step out to everything available at your fingertips. Enjoy all of Burwood's amenities within an easy walking distance - including Burwood railway station, Westfield shopping centre, Burwood Park and the vibrant array of eateries, cafes, and amenities on Burwood Road.

This property will suit the executive owner occupier or those seeking a "rock solid" investment with an affordable price!

Key Features and Inclusions:

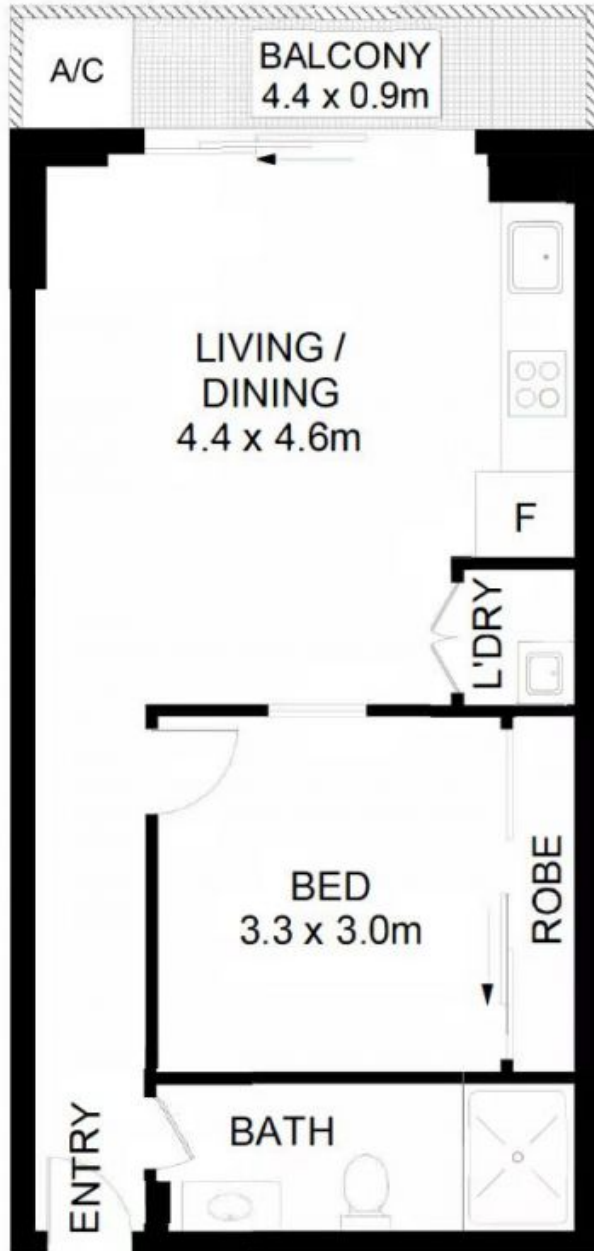
- Bright and airy open plan living and dining area access to balcony
- Modern gas kitchen with granite bench top, quality stainless steel appliances
- Spacious bedrooms with built-in robes
- Internal laundry with dryer

Price: SOLD
Council Rates: \$507.00 p/q
Water Rates: \$178.00 p/q
Strata Rates: \$859.15 p/q



Li (sammi) Fan

0415 959 888



UNCOVERED