



28 Polding Road Lindfield, NSW 4 2 1

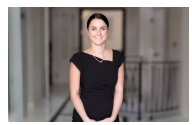
Four bedroom family home in Lindfield

Nestled in a convenient, yet quiet location in Lindfield, this quaint four bedroom family home offers a once in a life time opportunity in getting into this tightly held suburb in Sydney's prestigious North Shore. With easy access to public transport, schools, parks, and local shops.

- Features include:
- Hybrid timber flooring throughout, plus newly painted interiors.
 - Modern kitchen with stone bench top, gas cooktop, oven and dishwasher.
 - Separate dining and sitting areas plus a study nook.
 - Resort like pool with over-sized deck and private green outlook
 - All bedrooms are north facing, filled with natural light.
 - Primary bedroom with walk-in robe and ensuite.
 - Single level living, with easy care garden and internal laundry.
 - Within Lindfield Public School and Killara High School catchment areas.

Inspect: Wednesday, 18th September 2024 1:00 - 1:15

Price: \$1,250 pw
Available Date: 31/08/2024



Natasha Amos
0415 755 587



Stephanie Ryan
0451 307 760



LOWER FLOOR



LINDFIELD
28 POLDING ROAD
 *INTERNAL FLOOR AREA APPROX 141m²
 *COVERED ENTERTAINING AREA APPROX 21m²
 *TOTAL FLOOR AREA APPROX 163m²