

60 Sutton Place Cannon Hill, QLD 6  3  2 

### Exclusive Golf Frontage Living

Rarely available within 11km of a CBD is your chance to own an exclusive slice of property with direct golf course frontage. Imagine being one of the fortunate few, living in a brand-new home and being part of this beautiful community where new land is no longer available.

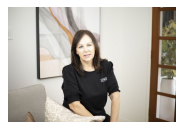
What makes this opportunity even more unique is its position within Minnippi. Your slice of paradise only has one adjoining neighbour and directly overlooks the par 3 ninth hole.

Nestled in the heart of Cannon Hill, the Minnippi Estate is a flawless blend of residential home sites and public open spaces. Minnippi is at the top of the list for those seeking visionary architectural living in an exclusive enclave.

...  
Don't just dream of the perfect home ? make it a reality at Minnippi....

...  
We have in preparing this information used our best endeavours to ensure that the informat...

Price: CONTACT AGENT



**Leanne Gunn**  
0413 817 092



**Leanne & Bridgette**  
0430 445 750

60 Sutton Place, Cannon Hill

6 3.5 2.5 1 3

~MINNIPPI GOLF COURSE~



~MINNIPPI GOLF COURSE~

