



22 Synergy Drive Coomera, QLD



4 bedroom home in the heart of the Genesis Estate

Welcome to your beautiful modern 4-bedroom home, perfectly located in the prestigious Genesis Coomera Estate. Overlooking Genesis Pond and parklands, this residence is just 100 meters from the Residents Club, which features a function room with a full-sized commercial kitchen, a resort-style pool, a full-sized gym, numerous BBQ areas, a kids' playground, and 24/7 manned security. With approximately 6 kilometers of walking tracks and 15 hectares of parkland, this house is an opportunity not to be missed!

- Master bedroom with ensuite, air conditioning, and ceiling fan
- 3 generously sized bedrooms with built-in robes and stunning parkland views
- Spacious air-conditioned living area downstairs
- Upstairs living area/rumpus room
- Modern kitchen with ample bench space
- Spacious double lock-up garage
- Extra-large yard overlooking parklands
- Minutes from the railway station and the new Westfield shopping center

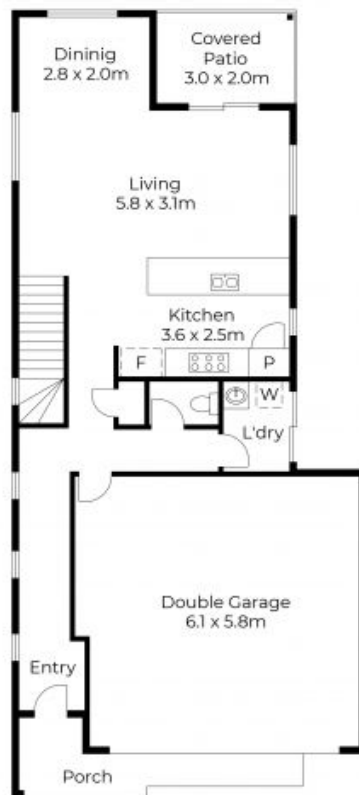
Price: \$850.00 pw

Available Date: 05/07/2024

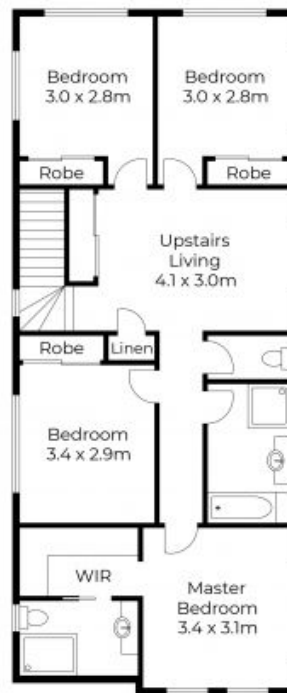


Georgia Macdonald

0402 883 995



Ground Floor



First Floor



Floor plans and site plans are for illustrative purposes only. They are not part of any legal document or title and are subject to errors, omission, and inaccuracies. Whilst every attempt has been made to ensure the accuracy of this plan, measurements of doors, windows, rooms, cupboards etc are approximate only.

APPROXIMATE AREA
LIVING AREA : 193 m²
TOTAL AREA : 292 m²