



C1108/30 Shepherd Street Liverpool, NSW



### LUXURY ONE-BEDROOM APARTMENT + MEDIA ROOM IN THE BINDERY

1 bedroom apartment located on level 11 is sunny and comfortable facing the river. It has a spacious multi-purpose room that can be used as a second bedroom.

Walk along Georges River to Train Station, shopping, and Schools.

Features:

- \*One bedroom with a Built-in Wardrobe facing the river
- \*Modern Bathroom with Mirror cabinet and large Shower
- \*Gourmet Kitchen with High-Quality Appliances and GAS Cooktop
- \*Open Living Area with LED lights to Sunny Balcony
- \*Quality Dishwasher
- \*Dryer in the internal laundry

Price:

\$560 pw



Faentina Young

0416 808 801

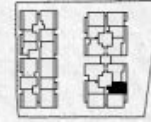


Faentina Young

0416 808 801



  
**THE x BINDERY**  
THE PAPER MILL ON SERRAVALLO RIVER



**1 BEDROOM + MEDIA ROOM**

APARTMENT NUMBER	LEVEL
C7.08	7
C8.08	8
C9.08	9
C10.08	10
C11.08	11
C12.08	12
C13.08	13
C14.08	14
C15.08	15
C16.08	16
C17.08	17
C18.08	18
C19.08	19
C20.08	20

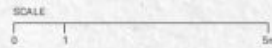
AREA	
INTERNAL	58m <sup>2</sup>
EXTERNAL	8m <sup>2</sup>
<b>TOTAL</b>	<b>66m<sup>2</sup></b>

**WOODS BAGOT**

ASPECT Studios



NOTES: 1. Particular items not included. 2. Details to be confirmed at contract for all appliances, finishes and fixtures.



[LIVEATTHEPAPERMILL.COM.AU](http://LIVEATTHEPAPERMILL.COM.AU)