



22/1 Lovett Street Manly Vale, NSW



## Beautifully renovated top floor apartment

Conveniently positioned on a leafy residential street within minutes of B-Line buses, cafes and shopping, this bright and spacious apartment puts an enviable northern beaches lifestyle within easy reach and is a true haven. Sumptuously renovated from top to bottom, with customised fixtures and finishes of the highest quality, this gorgeous home requires nothing more than to move in and enjoy the incredible lifestyle on offer.

- Air-conditioned living with custom wall cabinetry with LED strip lighting to house television and decorator/display items
- Custom dining space with built-in banquette-style seating with storage
- Designer Caesarstone kitchen with wide breakfast bar and integrated Miele appliances, including induction cooktop
- Generous master bedroom with sunny, leafy outlook, wall-to-wall built-in robes
- Good-sized second bedroom with built-in robes
- Engineered wide-board oak flooring and LED downlights throughout plus remote electric roller blinds

**Inspect:**

Saturday, 21st September 2024 10:00 - 10:30

**Price:** Price Guide \$1,100,000

**Council Rates:** \$403.90 p/q

**Water Rates:** \$171.41 p/q

**Strata Rates:** \$1,025.00 p/q



**Chris Lewis**

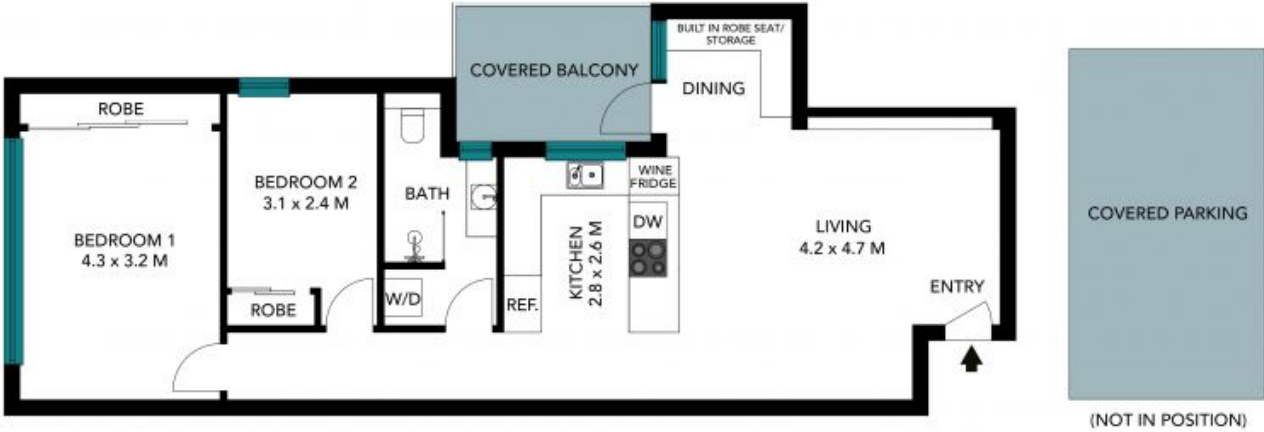
0431 179 861



**Louise Ashdown**

0414 764 108

22/1 Lovett St  
Manly Vale



The floor plan is not to scale, measurements are indicative and in metres. Exterior elements are not in position. Plans should not be relied on. Interested parties should make and rely on their own enquiries. All other information provided has been collected from reliable sources but cannot be guaranteed for accuracy.

22/1 Lovett St  
Manly Vale



The floor plan is not to scale; measurements are indicative and in metres. All features included in this 3D plan are for inspiration purposes only. This is not an exact replica of the property or the position of exterior elements. Plans should not be relied on. Interested parties should make and rely on their own enquiries.