



28 Glenora Road Yarrawarrah, NSW

4 

2 

1 

Elevated treetop living and panoramic valley views

Nestled above the trees and surrounded by native gardens, this superb property is your own private sanctuary. It features four good sized bedrooms, multiple living areas. Situated on a large 786sqm block offering a unique natural lifestyle. Convenient to schools, local parks and facilities, it's the perfect family home with lots of potential to add your own touch.

- Open plan living and dining leading out to a relaxing balcony with valley views
- Four large bedrooms, three with built-in wardrobes, master with private balcony
- Spacious kitchen w/breakfast bar, dishwasher, ample storage and air-con unit
- Additional family room flows seamlessly to outdoor covered entertaining area
- Upstairs bathroom features stained glass window, second bathroom downstairs
- Expansive under house storage offering potential for future development, single carport
- Elevated positioning with lush gardens and valley views, close to local parklands
- Centrally located close to primary and secondary schools, shops and transport

Price: Contact agent

Council Rates: \$360.00 p/q

Water Rates: \$172.00 p/q



Lora Moore

0418 455 050



Karan Bambacas

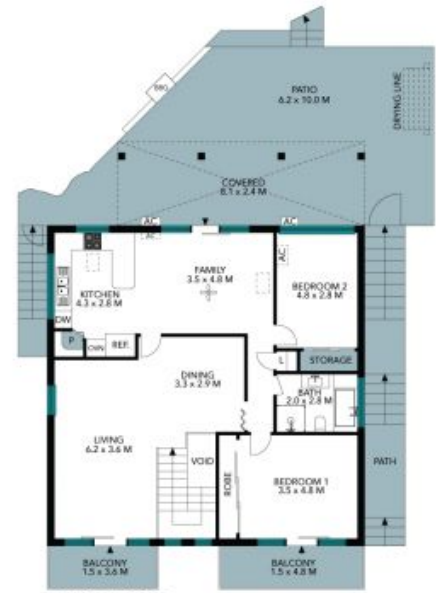
0450 540 857



Site Plan



Lower Ground Floor



Upper Ground Floor



The site plan and floor plan are not to scale; measurements are indicative and in metres. Bushes and trees are placed for illustration purposes. Plans should not be relied on. Interested parties should make and rely on their own enquiries. All other information provided has been collected from reliable sources but cannot be guaranteed for accuracy.

28 Glenora Road
Yarrowarra

STONE



Lower Ground Floor



Upper Ground Floor



The floor plan is not to scale; measurements are indicative and in metres. All features included in this 3D plan are for inspiration purposes only. This is not an exact replica of the property or the position of exterior elements. Plans should not be relied on. Interested parties should make and rely on their own enquiries.